

ORIENTAL MOTOR UNIPOLAR 5 OR 6- WIRE HIGH RESOLUTION PKP SERIES HYBRID STEPPER MOTOR

PKP223MU09A

PKP Series stepper motor, 2-Phase, 28mm frame, 5 or 6 leads, single shaft

- 28mm - 56.4mm Frame Size
- 0.07-1.8Nm Max. Holding Torque
- 0.95-2 A/Phase Rated Current
- Up to 1.7x more torque than other stepper motors.



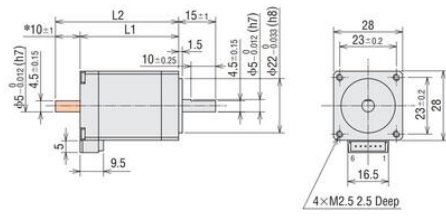
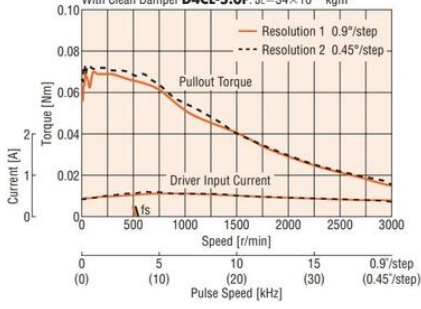
PRODUCT DESCRIPTION

TECHNICAL DATA

Configuration	Single Shaft
Frame size	28 mm
Inductance	1.9 mH/Phase
Maximum Holding Torque	0.07 Nm
Number of phases	2
Number of Wires	6
Rated Current	0.95 A/Phase
Rotor Inertia	8.6×10^{-7}
Step angle	0.9 °
Type	High Resolution
Weight	0.11 kg
Winding Resistance	3.11 Ω /Phase
Voltage	2.95 V DC

PKP223MU09A/PKP223MU09B

Driver: **CMD2109P** Power Supply Voltage: 24 VDC Current: 0.95 A/Phase
 With Clean Damper **D4CL-5.0F** $J_s = 34 \times 10^{-7} \text{ kgm}^2$



*The length of the shaft flat on the double shaft model is 10 ± 0.25 .
 © These dimensions are for double shaft motors.
 For single shaft motors, ignore the shaded areas.