

IDEM GLHD WIRE SWITCH

141029A-FZ
 GLHD M20 '4NC 2NO' LED 24V - -40°

- Up to 200 m for one switch
- 4 NC + 2 NO contacts
- 2 - color LED
- Integrated emergency button
- Available in the EX version



PRODUCT DESCRIPTION

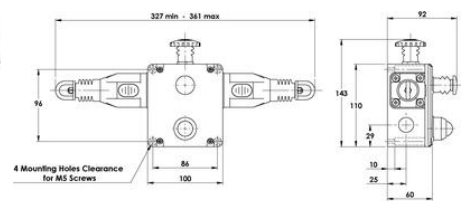
GLHD wire switch in an aluminum alloy housing, was created to protect long conveyors, with a range of up to 200 m per one switch. The 2-color LED, signaling the operation of the switch, is visible from a large distance. This switch, combined with the GLHL and GLHR models, provides a range of up to 250 m per one set.

The GLHD wire switches are equipped with 4 NC contacts and 2 NO contacts.

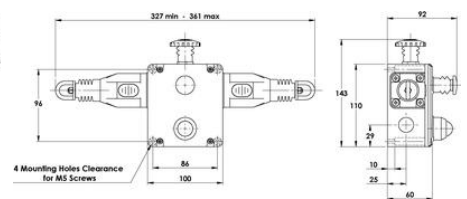
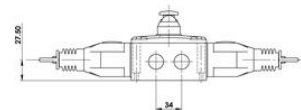
TECHNICAL DATA

Annual usage	8 cycles per hour/24 hours per day/365 days
Approvals	EN60947-5-5, ISO 13850, ISO 13849-1, EN62061, EN60947-5-1, UL 508, CE, cULus, TÜV
Conduit entry	4 x M20
Contact type	EN60947-5-1 double break type Zb. Snap action up to 4NC (positive break) 2NO (auxiliary)
Contacts	4NC 2NO
Fittings	LED
Housing material	Die cast metal
Integrated emergency stop button	No
Integrated LED indication	Yes
IP class	IP67
LED indication	Steady green/Flashing red
LED supply voltage	24Vdc
Material contacts	Silver
Mechanical reliability B10d	1.5 x 10 ⁶ operations at 100mA load
Mounting	4 x M5
MTTFd	214 years
Operating temperature	-40°C +80°C

PFHd	1.0×10^{-7}
Rope span	250m dual head
Rope tension device	IDEM tensioner/gripper (quick fixing)
Rope type	4.00mm outside diameter. Steel inner - PVC sheath
Short circuit overload protection	Fuse externally 10A(FF)
Tension force (typical mid setting)	130 N
Termination	Clamp up to 2.5mm ² conductors
Thermal current (I_{th})	10 A
Typical operating force (rope pulled)	<math><125\text{N}</math> <math><300\text{mm}</math> deflection
Weight	1350 g



All Dimensions in mm



All Dimensions in mm

