

IDEM GLHD WIRE SWITCH

141001A
 GLHD M20 '4NC 2NO' E Stop & LED 24V

- Up to 200 m for one switch
- 4 NC + 2 NO contacts
- 2 - color LED
- Integrated emergency button
- Available in the EX version



PRODUCT DESCRIPTION

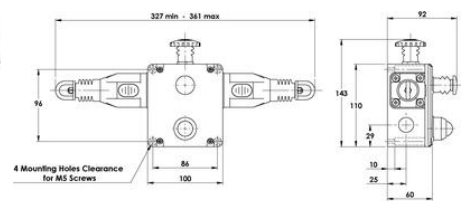
GLHD wire switch in an aluminum alloy housing, was created to protect long conveyors, with a range of up to 200 m per one switch. The 2-color LED, signaling the operation of the switch, is visible from a large distance. This switch, combined with the GLHL and GLHR models, provides a range of up to 250 m per one set.

The GLHD wire switches are equipped with 4 NC contacts and 2 NO contacts.

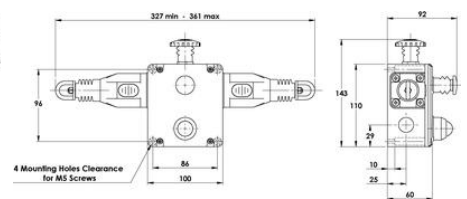
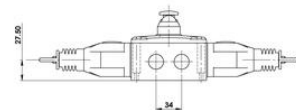
TECHNICAL DATA

Annual usage	8 cycles per hour/24 hours per day/365 days
Approvals	EN60947-5-5, ISO 13850, ISO 13849-1, EN62061, EN60947-5-1, UL 508, CE, cULus, TÜV
Conduit entry	4 x M20
Contact type	EN60947-5-1 double break type Zb. Snap action up to 4NC (positive break) 2NO (auxiliary)
Contacts	4NC 2NO
Fittings	E-stop and LED
Housing material	Die cast metal
Integrated emergency stop button	Yes
Integrated LED indication	Yes
IP class	IP67
LED indication	Steady green/Flashing red
LED supply voltage	24Vdc
Material contacts	Silver
Mechanical reliability B10d	1.5 x 10 ⁶ operations at 100mA load
Mounting	4 x M5
MTTFd	214 years
Operating temperature	-25°C +80°C

PFHd	1.0×10^{-7}
Rope span	250m dual head
Rope tension device	IDEM tensioner/gripper (quick fixing)
Rope type	4.00mm outside diameter. Steel inner - PVC sheath
Short circuit overload protection	Fuse externally 10A(FF)
Tension force (typical mid setting)	130 N
Termination	Clamp up to 2.5mm ² conductors
Thermal current (I_{th})	10 A
Typical operating force (rope pulled)	<math><125\text{N}</math> <math><300\text{mm}</math> deflection
Weight	1350 g



All Dimensions in mm



All Dimensions in mm

