

## BLD-20DIN

BLDC motor controller

BLD-20DIN

BLDC controller - 24 – 48 V - 20A

- 24 - 48 V DC
- 20A rated (30A peak)
- Enclosed DIN rail mounted
- Built in potentiometer for control



### PRODUCT DESCRIPTION

### TECHNICAL DATA

Brake output	Yes
Change direction of rotation (CW/CCW)	Yes
Current limit adjustable	Yes
Mounting	DIN rail
Peak current	30
Potentiometer adjustable speed	Yes
RS485/Modbus	Yes
Softstart/stop	Yes
Speed settings	Yes
Supplier	Smart Motor Devices
Weight	200 g

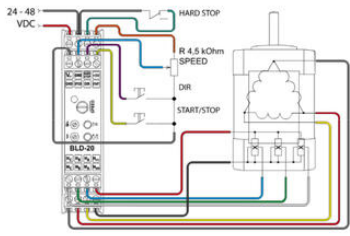


Fig 3 Connection diagram.