

## POWER SUPPLIES ACCESSORIES

ZM11.SIDE

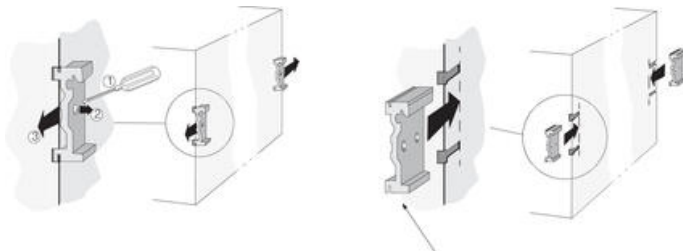
Side Mounting Bracket



### PRODUCT DESCRIPTION

#### Screw bracket for series Silverline

The screw brackets are designed for use where there is no DIN rail or when a rail is not sufficiently stable.



#### Screw bracket for series Dimension



The screw brackets are designed for use where there is no DIN rail or when a rail is not sufficiently stable. Remove the existing brackets on the unit and then mount the screw brackets in the same screw holes.

#### Side-mount bracket for series Dimension



The side bracket enables mounting of the Dimension unit in shallow enclosures. The bracket in its basic configuration is for screw assembly. The DIN rail bracket that is removed from the unit can be mounted on the side bracket for attachment to the DIN rail.

## TECHNICAL DATA

### DIMENSIONS

Width	145 mm
Height	65 mm
Depth	37 mm
Weight	0.14 kg
Type Power Supply	Accessories

