

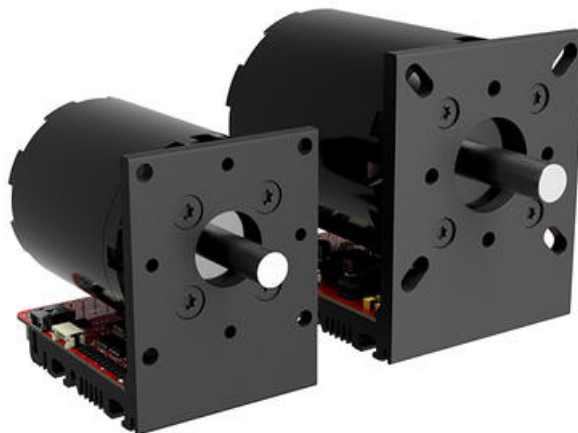
## SIMPLEX MOTION - SH SERIES

Smart open framed fully integrated servomotors

SH100B

Integrated servomotor open frame 0,51Nm

- Standalone / comms based control
- 12-48Vdc, >0.72Nm, >3000rpm
- 4096 ppr encoder
- 12 inputs / 4 outputs
- Modbus RTU / CANOpen / USB



### PRODUCT DESCRIPTION

The SH series drive unit is controlled by a data bus, either USB or Modbus RTU (RS485) or CANOpen 301. The outrunner motor design typically has 2-3 times a higher peak torque per weight compared to many conventional rotor designs.

The integrated controller performs closed loop control of speed and position, it supports acceleration and deceleration ramping for smooth motion patterns. The controller also provides protection from over-current, over-voltage, excessive temperature and torque.

To facilitate standalone operation, the built-in control unit has 8 digital inputs, 4 analogue inputs and 8 digital outputs. These can be configured to provide simple direct control using buttons and potentiometers interfaces and allow the SH series to be used outside of PLC based system control.

### TECHNICAL DATA

Analogue Inputs	4
Digital inputs	8
Digital outputs	4
Max current	25 A
Max. torque	2
Nominal current	8 A
Nominal speed	3000 rpm
Nominal torque	0.51
Number of pulses per revolution	4096
Shaft diameter	8 mm
Supply voltage	12 V DC, 24 V DC
Weight	0.5 kg