

## KUEBLER - INCREMENTAL ENCODER

### 3610/3620

#### SERIE 3620

- Housing diameter Ø36 mm
- M12 connector
- 25 to 2 500 pulses per revolution



#### PRODUCT DESCRIPTION

Model Series 3610/3620 is small and robust with up to 2 500 pulses per revolution.  
Available in Shoulder and Hole Axle Design, with Push-Pull or RS422.  
Suitable for applications where space is limited.  
Different options with radial, axial cable or M12 (8 pin).

Please refer to the images below for ordering information.

Order code		8.3610 . XXXXX . XXXX				
Shaft version		Type	a	b	c	d
<b>a</b>	Flange					
	2 = synchro flange, Ø 36.5 mm [1.44"]					
	<b>3 = clamping flange, Ø 36.5 mm [1.44"]</b>					
<b>b</b>	Shaft (ø x L)					
	1 = ø 4 x 10 mm [0.16 x 0.39"]					
	2 = ø 5 x 10 mm [0.20 x 0.39"]					
	<b>3 = ø 6 x 12.5 mm [0.24 x 0.49"], with flat</b>					
	5 = ø 1/4" x 12.5 mm [1/4" x 0.49"], with flat					
<b>c</b>	Output circuit / power supply					
	2 = push-pull (with inverted signal) / 5 ... 18 V DC					
	<b>4 = push-pull (with inverted signal) / 8 ... 30 V DC</b>					
	3 = push-pull (without inverted signal) / 8 ... 30 V DC					
	6 = RS422 (with inverted signal) / 5 V DC					
	5 = RS422 (with inverted signal) / 8 ... 30 V DC					
<b>d</b>	Type of connection					
	1 = axial cable, 2 m [5.56'] PVC					
	A = axial cable, special length PVC *)					
	<b>2 = radial cable, 2 m [5.56'] PVC</b>					
	B = radial cable, special length PVC *)					
	3 = axial M12 connector, 8-pin					
	4 = radial M12 connector, 8-pin					
	*) Available special lengths (connection types A, B): 3, 5, 8, 10, 15 m [9.84, 16.40, 26.25, 32.80, 49.21'] order code expansion .XXXX = length in dm ex.: 8.3610.334A.1024.0030 (for cable length 3 m)					
<b>e</b>	Pulse rate					
	25, 100, <b>200</b> , 360, <b>500</b> , 512, 600, 1000, <b>1024</b> , 1500, 2000, <b>2048</b> , <b>2500</b> (e.g. 500 pulses => 0500)					
	Optional on request - other pulse rates					

## Order code Hollow shaft

8.3620

Type

.

a

X

b

X

c

X

d

.

e

X

X

X

X

X

X

X

X

X

X

X

X

X

X

X

X

X

X

X

X

X

X

X

X

X

X

X

X

X

X

X

X

X

X

X

X

X

X

X

X

X

X

X

X

X

X

X

X

X

X

X

X

X

X

X

X

X

X

X

X

X

X

X

X

X

X

X

X

X

X

X

X

X

X

X

X

X

X

X

X

X

X

X

X

X

X

X

X

X

X

X

### a Flange

1 = with spring element, short

2 = with spring element, long

5 = with stator coupling,  $\varnothing$  46 mm [1.81"]

### b Through hollow shaft

2 =  $\varnothing$  6 mm [0.24"]

4 =  $\varnothing$  8 mm [0.32"]

3 =  $\varnothing$  1/4"

### c Output circuit / power supply

2 = push-pull (with inverted signal) / 5 ... 18 V DC

4 = push-pull (with inverted signal) / 8 ... 30 V DC

3 = push-pull (without inverted signal) / 8 ... 30 V DC

6 = RS422 (with inverted signal) / 5 V DC

5 = RS422 (with inverted signal) / 8 ... 30 V DC

### d Type of connection

E = radial cable, 2 m [5.56'] PVC

B = radial cable, special length PVC \*)

4 = radial M12 connector, 8-pin

\*) Available special lengths (connection type B):

3, 5, 8, 10, 15 m [9.84, 16.40, 26.25, 32.80, 49.21']

order code expansion .XXXX = length in dm

ex.: 8.3620.224B.1024.0030 (for cable length 3 m)

### e Pulse rate

25, 100, 200, 360, 500, 512, 600, 1000,

1024, 1500, 2000, 2048, 2500

(e.g. 500 pulses => 0500)

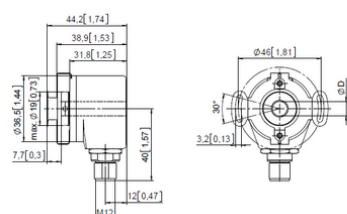
Optional on request

- other pulse rates

## TECHNICAL DATA

Connection	Cable, M12
Housing diameter	36 mm
IP class	IP50, IP64, IP65
Mounting	Hollow shaft
Output	Push/Pull, RS422
Pulse max	2500
Sensor type	Incremental
Shaft diameter max	8 mm
Shaft diameter min	6 mm
Supply voltage dc max	30 V DC
Supply voltage dc min	5 V DC
Temperature operational max	85 °C
Temperature operational min	-20 °C

5 - Statorkoppling



2 - l ng momentarm

