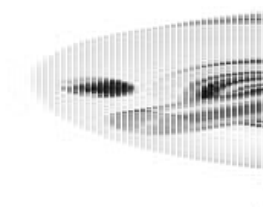


KUEBLER - INCREMENTAL ENCODER MINIATURE SERIES 2400/2420

2420.1222.1024

INC.ENC 1024PPR 6mm H/SHFT RAD



- House diameter Ø24 mm
- Cable connection 2 metres
- Miniature version.
- Temperature compensation

PRODUCT DESCRIPTION

Model 2400/2420 is a pulse generator series for industrial applications for confined spaces or where the sensor needs to be lightweight. The models 2400/2420 have a so-called Push-Pull output which means that it can be connected to an input that is either PNP or NPN. Output signals are A, B, 0. They also have inverted signals to be connected to inputs that are adapted for malfunction.

Please refer to the images below for ordering information.

Order code
Shaft version

05.2400
Type

XXXX

a b c d e

a

Flange

1 = \varnothing 24 mm [0.94"]
3 = \varnothing 28 mm [1.10"]
2 = \varnothing 30 mm [1.18"]

b

Shaft ($\varnothing \times L$)

1 = \varnothing 4 x 10 mm [0.16 x 0.39"]
3 = \varnothing 5 x 10 mm [0.20 x 0.39"], with flat
2 = \varnothing 6 x 10 mm [0.24 x 0.39"]

4 = \varnothing 1/4" x 10 mm [1/4" x 0.39"], with flat ¹⁾
6 = \varnothing 6 x 10 mm [0.24 x 0.39"], with flat ¹⁾

c

Output circuit / power supply

1 = push-pull (without inverted signal) / 5 ... 24 V DC
2 = push-pull (with inverted signal) / 5 ... 24 V DC
3 = push-pull (without inverted signal) / 8 ... 30 V DC
4 = push-pull (with inverted signal) / 8 ... 30 V DC

d

Type of connection

1 = axial cable, 2 m [6.56"] PVC
A = axial cable, special length PVC *)
2 = radial cable, 2 m [6.56"] PVC
B = radial cable, special length PVC *)

*) Available special lengths (connection types A, B):
3, 5, 8, 10, 15 m [9.84, 16.40, 26.25, 32.80, 49.21"]
order code expansion .XXXX = length in dm
ex.: 05.2400.122A.1024.0030 (for cable length 3 m)

e

Pulse rate

4, 6, 8, 10, 16, 20, 25, 36, 40, 50, 60,
80, **100**, 120, 125, 180, 200, 250, 300,
360, 400, 500, **512**, **1000**, **1024**
(e.g. 360 pulses => 0360)

Stock types

05.2400.1122.0050
05.2400.1122.0360
05.2400.1122.0500
05.2400.1122.1000
05.2400.1122.1024

Optional on request
- other pulse rates

Order code

Hollow shaft

05.2420

Type

1

X

X

X

.

XXXX

e

a

Flange

1 = ø 24 mm [0.94"]

b

Blind hollow shaft

(insertion depth max. 14 mm [0.55"])

1 = ø 4 mm [0.16"]

2 = ø 6 mm [0.24"]

4 = ø 1/4" ¹⁾

c

Output circuit / power supply

1 = push-pull (without inverted signal) / 5 ... 24 V DC

2 = push-pull (with inverted signal) / 5 ... 24 V DC

3 = push-pull (without inverted signal) / 8 ... 30 V DC

4 = push-pull (with inverted signal) / 8 ... 30 V DC

d

Type of connection

1 = axial cable, 2 m [6.56'] PVC

A = axial cable, special length PVC *)

2 = radial cable, 2 m [6.56'] PVC

B = radial cable, special length PVC *)

*) Available special lengths (connection types A, B):

3, 5, 8, 10, 15 m [9.84, 16.40, 26.25, 32.80, 49.21']

order code expansion .XXXX = length in dm

ex.: 05.2420.122A.1024.0030 (for cable length 3 m)

e

Pulse rate

4, 6, 8, 10, 16, 20, 25, 36, 40, 50, 60,

80, 100, 120, 125, 180, 200, 250, 300,

360, 400, 500, 512, 1000, 1024

(e.g. 360 pulses => 0360)

Stock types

05.2420.1212.0500

05.2420.1222.0500

05.2420.1222.1000

05.2420.1222.1024

Optional on request

- other pulse rates

TECHNICAL DATA

Connection	Cable
Housing diameter	24 mm
IP class	IP50
Mounting	Hollow shaft
Output	Push/Pull
Pulse max	5000
Resolution	1024 pulses/turn
Sensor type	Incremental
Shaft diameter	6 mm
Supply voltage dc max	30 V DC
Supply voltage dc min	5 V DC
Temperature operational max	85 °C
Temperature operational min	-20 °C
Version	Multiturn

+UB manöverspänning
OV manöverspänning
Kanal A (Kanal A)
Kanal B (Kanal B)
Kanal C (Kanal C)
Kanal D (Kanal D)

Var noga med att ALLTID isolera
använda kablar innan givaren
spänningssätts.

+UB manöverspänning
OV manöverspänning
Kanal A (Kanal A)
Kanal B (Kanal B)
Kanal C (Kanal C)
Kanal D (Kanal D)

Var noga med att ALLTID isolera
använda kablar innan givaren
spänningssätts.