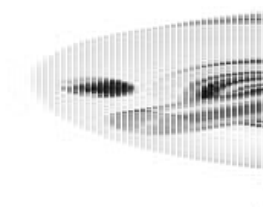


## KUEBLER - INCREMENTAL ENCODER MINIATURE SERIES 2400/2420

2420.1222.1000

INC.ENC 1000PPR 6mm H/SHFT RAD



- House diameter Ø24 mm
- Cable connection 2 metres
- Miniature version.
- Temperature compensation

## PRODUCT DESCRIPTION

Model 2400/2420 is a pulse generator series for industrial applications for confined spaces or where the sensor needs to be lightweight. The models 2400/2420 have a so-called Push-Pull output which means that it can be connected to an input that is either PNP or NPN. Output signals are A, B, 0. They also have inverted signals to be connected to inputs that are adapted for malfunction.

Please refer to the images below for ordering information.

Order code Shaft version	05.2400 Type	. XX XX XX . XXXX a b c d e	
<b>a</b> Flange <b>1</b> = $\varnothing$ 24 mm [0.94"] 3 = $\varnothing$ 28 mm [1.10"] 2 = $\varnothing$ 30 mm [1.18"]	<b>c</b> Output circuit / power supply 1 = push-pull (without inverted signal) / 5 ... 24 V DC 2 = push-pull (with inverted signal) / 5 ... 24 V DC 3 = push-pull (without inverted signal) / 8 ... 30 V DC <b>4</b> = <b>push-pull (with inverted signal) / 8 ... 30 V DC</b>	<b>e</b> Pulse rate 4, 6, 8, 10, 16, 20, 25, 36, 40, 50, 60, 80, <b>100</b> , 120, 125, 180, 200, 250, 300, <b>360</b> , 400, 500, <b>512</b> , <b>1000</b> , <b>1024</b> (e.g. 360 pulses => 0360)	Stock types 05.2400.1122.0050 05.2400.1122.0360 05.2400.1122.0500 05.2400.1122.1000 05.2400.1122.1024  Optional on request - other pulse rates
<b>b</b> Shaft ( $\varnothing \times L$ ) <b>1</b> = $\varnothing$ 4 x 10 mm [0.16 x 0.39"] 3 = $\varnothing$ 5 x 10 mm [0.20 x 0.39"], with flat 2 = $\varnothing$ 6 x 10 mm [0.24 x 0.39"]  4 = $\varnothing$ 1/4" x 10 mm [1/4" x 0.39"], with flat <sup>1)</sup> 6 = $\varnothing$ 6 x 10 mm [0.24 x 0.39"], with flat <sup>1)</sup>	<b>d</b> Type of connection <b>1</b> = <b>axial cable, 2 m [6.56"] PVC</b> A = axial cable, special length PVC *) 2 = radial cable, 2 m [6.56"] PVC B = radial cable, special length PVC *)  *) Available special lengths (connection types A, B): 3, 5, 8, 10, 15 m [9.84, 16.40, 26.25, 32.80, 49.21"] order code expansion .XXXX = length in dm ex.: 05.2400.122A.1024.0030 (for cable length 3 m)		

Order code Hollow shaft		05.2420 Type	1 a	X b	X c	X d	XXXX e
<b>a</b> Flange <b>1 = ø 24 mm [0.94"]</b>		<b>c</b> Output circuit / power supply 1 = push-pull (without inverted signal) / 5 ... 24 V DC 2 = push-pull (with inverted signal) / 5 ... 24 V DC 3 = push-pull (without inverted signal) / 8 ... 30 V DC <b>4 = push-pull (with inverted signal) / 8 ... 30 V DC</b>		<b>e</b> Pulse rate 4, 6, 8, 10, 16, 20, 25, 36, 40, 50, 60, 80, <b>100</b> , 120, 125, 180, 200, 250, 300, <b>360</b> , 400, 500, <b>512</b> , <b>1000</b> , <b>1024</b> (e.g. 360 pulses => 0360)			
<b>b</b> Blind hollow shaft (insertion depth max. 14 mm [0.55"]) <b>1 = ø 4 mm [0.16"]</b> <b>2 = ø 6 mm [0.24"]</b>  <b>4 = ø 1/4" <sup>1)</sup></b>		<b>d</b> Type of connection <b>1 = axial cable, 2 m [6.56'] PVC</b> A = axial cable, special length PVC *) 2 = radial cable, 2 m [6.56'] PVC B = radial cable, special length PVC *)  *) Available special lengths (connection types A, B): 3, 5, 8, 10, 15 m [9.84, 16.40, 26.25, 32.80, 49.21'] order code expansion .XXXX = length in dm ex.: 05.2420.122A.1024.0030 (for cable length 3 m)		Stock types 05.2420.1212.0500 05.2420.1222.0500 05.2420.1222.1000 05.2420.1222.1024  Optional on request - other pulse rates			

TECHNICAL DATA

Connection	Cable
Housing diameter	24 mm
IP class	IP50
Mounting	Hollow shaft
Output	Push/Pull
Pulse max	5000
Resolution	1000 pulses/turn
Sensor type	Incremental
Shaft diameter	6 mm
Supply voltage dc max	30 V DC
Supply voltage dc min	5 V DC
Temperature operational max	85 °C
Temperature operational min	-20 °C
Version	Multiturn

