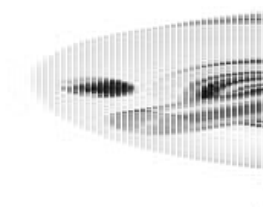


KUEBLER - INCREMENTAL ENCODER MINIATURE SERIES 2400/2420

2420.1222.0100

INC.ENC 100pp 6mm HSHFT RAD 2M



- House diameter Ø24 mm
- Cable connection 2 metres
- Miniature version.
- Temperature compensation

PRODUCT DESCRIPTION

Model 2400/2420 is a pulse generator series for industrial applications for confined spaces or where the sensor needs to be lightweight. The models 2400/2420 have a so-called Push-Pull output which means that it can be connected to an input that is either PNP or NPN. Output signals are A, B, 0. They also have inverted signals to be connected to inputs that are adapted for malfunction.

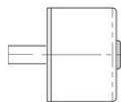
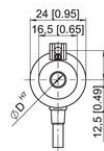
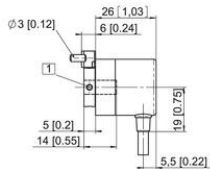
Please refer to the images below for ordering information.

Order code Shaft version	05.2400 Type	. XX XX . XXXX	
a Flange 1 = \varnothing 24 mm [0.94"] 3 = \varnothing 28 mm [1.10"] 2 = \varnothing 30 mm [1.18"]	c Output circuit / power supply 1 = push-pull (without inverted signal) / 5 ... 24 V DC 2 = push-pull (with inverted signal) / 5 ... 24 V DC 3 = push-pull (without inverted signal) / 8 ... 30 V DC 4 = push-pull (with inverted signal) / 8 ... 30 V DC	e Pulse rate 4, 6, 8, 10, 16, 20, 25, 36, 40, 50, 60, 80, 100 , 120, 125, 180, 200, 250, 300, 360 , 400, 500, 512 , 1000 , 1024 (e.g. 360 pulses => 0360)	Stock types 05.2400.1122.0050 05.2400.1122.0360 05.2400.1122.0500 05.2400.1122.1000 05.2400.1122.1024 Optional on request - other pulse rates
b Shaft ($\varnothing \times L$) 1 = \varnothing 4 x 10 mm [0.16 x 0.39"] 3 = \varnothing 5 x 10 mm [0.20 x 0.39"], with flat 2 = \varnothing 6 x 10 mm [0.24 x 0.39"] 4 = \varnothing 1/4" x 10 mm [1/4" x 0.39"], with flat ¹⁾ 6 = \varnothing 6 x 10 mm [0.24 x 0.39"], with flat ¹⁾	d Type of connection 1 = axial cable, 2 m [6.56"] PVC A = axial cable, special length PVC *) 2 = radial cable, 2 m [6.56"] PVC B = radial cable, special length PVC *) *) Available special lengths (connection types A, B): 3, 5, 8, 10, 15 m [9.84, 16.40, 26.25, 32.80, 49.21"] order code expansion .XXXX = length in dm ex.: 05.2400.122A.1024.0030 (for cable length 3 m)		

Order code Hollow shaft		05.2420 Type	1 a	X b	X c	X d	XXXX e	
a	Flange 1 = ø 24 mm [0.94"]	c	Output circuit / power supply 1 = push-pull (without inverted signal) / 5 ... 24 V DC 2 = push-pull (with inverted signal) / 5 ... 24 V DC 3 = push-pull (without inverted signal) / 8 ... 30 V DC 4 = push-pull (with inverted signal) / 8 ... 30 V DC				e	Pulse rate 4, 6, 8, 10, 16, 20, 25, 36, 40, 50, 60, 80, 100, 120, 125, 180, 200, 250, 300, 360, 400, 500, 512, 1000, 1024 (e.g. 360 pulses => 0360)
b	Blind hollow shaft (insertion depth max. 14 mm [0.55"]) 1 = ø 4 mm [0.16"] 2 = ø 6 mm [0.24"] 4 = ø 1/4" ¹⁾	d	Type of connection 1 = axial cable, 2 m [6.56'] PVC A = axial cable, special length PVC *) 2 = radial cable, 2 m [6.56'] PVC B = radial cable, special length PVC *) *) Available special lengths (connection types A, B): 3, 5, 8, 10, 15 m [9.84, 16.40, 26.25, 32.80, 49.21'] order code expansion .XXXX = length in dm ex.: 05.2420.122A.1024.0030 (for cable length 3 m)				Stock types 05.2420.1212.0500 05.2420.1222.0500 05.2420.1222.1000 05.2420.1222.1024 Optional on request - other pulse rates	

TECHNICAL DATA

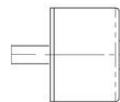
Connection	Cable
Housing diameter	24 mm
IP class	IP50
Mounting	Hollow shaft
Output	Push/Pull
Pulse max	5000
Resolution	100 pulses/turn
Sensor type	Incremental
Shaft diameter	6 mm
Supply voltage dc max	30 V DC
Supply voltage dc min	5 V DC
Temperature operational max	85 °C
Temperature operational min	-20 °C
Version	Multiturn



Brun
Vit
Grön
Gul
Grå
Rosa
Blå
Röd

+UB manöverspänning
0V manöverspänning
Kanal A
(Kanal A)
Kanal B
(Kanal B)
Kanal C
(Kanal C)

Var noga med att **ALLTID** isolera
använda kablar innan givaren
spänningssätts.



Brun
Vit
Grön
Gul
Grå
Rosa
Blå
Röd

+UB manöverspänning
0V manöverspänning
Kanal A
(Kanal A)
Kanal B
(Kanal B)
Kanal C
(Kanal C)

Var noga med att **ALLTID** isolera
använda kablar innan givaren
spänningssätts.