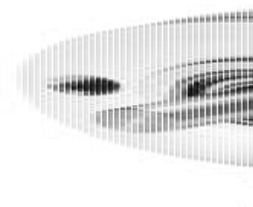


KUEBLER - INCREMENTAL ENCODER MINIATURE SERIES 2400/2420

2420.1222.0050

- House diameter Ø24 mm
- Cable connection 2 metres
- Miniature version.
- Temperature compensation



PRODUCT DESCRIPTION

Model 2400/2420 is a pulse generator series for industrial applications for confined spaces or where the sensor needs to be lightweight. The models 2400/2420 have a so-called Push-Pull output which means that it can be connected to an input that is either PNP or NPN. Output signals are A, B, 0. They also have inverted signals to be connected to inputs that are adapted for malfunction.

Please refer to the images below for ordering information.

Order code		05.2400		XXXX		XXXX	
Shaft version		Type	a	b	c	d	e
a Flange		c Output circuit / power supply		e Pulse rate			
1 = Ø 24 mm [0.94"]		1 = push-pull (without inverted signal) / 5 ... 24 V DC		4, 6, 8, 10, 16, 20, 25, 36, 40, 50, 60,			
3 = Ø 28 mm [1.10"]		2 = push-pull (with inverted signal) / 5 ... 24 V DC		80, 100 , 120, 125, 180, 200, 250, 300,			
2 = Ø 30 mm [1.18"]		3 = push-pull (without inverted signal) / 8 ... 30 V DC		360 , 400, 500, 512 , 1000 , 1024			
		4 = push-pull (with inverted signal) / 8 ... 30 V DC		(e.g. 360 pulses => 0360)			
b Shaft (Ø x L)		d Type of connection		Stock types			
1 = Ø 4 x 10 mm [0.16 x 0.39"]		1 = axial cable, 2 m [6.56'] PVC		05.2400.1122.0050			
3 = Ø 5 x 10 mm [0.20 x 0.39"], with flat		A = axial cable, special length PVC *)		05.2400.1122.0360			
2 = Ø 6 x 10 mm [0.24 x 0.39"]		2 = radial cable, 2 m [6.56'] PVC		05.2400.1122.0500			
		B = radial cable, special length PVC *)		05.2400.1122.1000			
4 = Ø 1/4" x 10 mm [1/4" x 0.39"], with flat ¹⁾		*) Available special lengths (connection types A, B):		05.2400.1122.1024			
6 = Ø 6 x 10 mm [0.24 x 0.39"], with flat ¹⁾		3, 5, 8, 10, 15 m [9.84, 16.40, 26.25, 32.80, 49.21']					
		order code expansion .XXXX = length in dm					
		ex.: 05.2400.122A.1024.0030 (for cable length 3 m)					
				Optional on request			
				- other pulse rates			

Order code Hollow shaft

05.2420
Type

1 XXXX . XXXX
a b c d e

a Flange

1 = \varnothing 24 mm [0.94"]

b Blind hollow shaft

(insertion depth max. 14 mm [0.55"])

1 = \varnothing 4 mm [0.16"]

2 = \varnothing 6 mm [0.24"]

4 = \varnothing 1/4" ¹⁾

c Output circuit / power supply

1 = push-pull (without inverted signal) / 5 ... 24 V DC

2 = push-pull (with inverted signal) / 5 ... 24 V DC

3 = push-pull (without inverted signal) / 8 ... 30 V DC

4 = **push-pull (with inverted signal) / 8 ... 30 V DC**

d Type of connection

1 = **axial cable, 2 m [6.56'] PVC**

A = axial cable, special length PVC *)

2 = radial cable, 2 m [6.56'] PVC

B = radial cable, special length PVC *)

*) Available special lengths (connection types A, B):

3, 5, 8, 10, 15 m [9.84, 16.40, 26.25, 32.80, 49.21']

order code expansion .XXXX = length in dm

ex.: 05.2420.122A.1024.0030 (for cable length 3 m)

e Pulse rate

4, 6, 8, 10, 16, 20, 25, 36, 40, 50, 60,
80, **100**, 120, 125, 180, 200, 250, 300,
360, 400, 500, **512**, **1000**, **1024**
(e.g. 360 pulses => 0360)

Stock types

05.2420.1212.0500

05.2420.1222.0500

05.2420.1222.1000

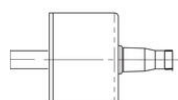
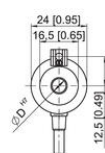
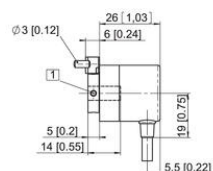
05.2420.1222.1024

Optional on request

- other pulse rates

TECHNICAL DATA

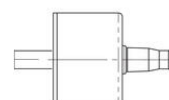
Connection	Cable
Housing diameter	24 mm
IP class	IP50
Mounting	Hollow shaft
Output	Push/Pull
Pulse max	5000
Resolution	50 pulses/turn
Sensor type	Incremental
Shaft diameter	6 mm
Supply voltage dc max	30 V DC
Supply voltage dc min	5 V DC
Temperature operational max	85 °C
Temperature operational min	-20 °C
Version	Multiturn



Brun
Vit
Grön
Gul
Grå
Rosa
Blå
Röd

+UB manöverspänning
0V manöverspänning
Kanal A
(Kanal A)
Kanal B
(Kanal B)
Kanal C
(Kanal C)

Var noga med att ALLTID isolera
använda kablar innan givaren
spänningssätts.



Brun
Vit
Grön
Gul
Grå
Rosa
Blå
Röd

+UB manöverspänning
0V manöverspänning
Kanal A
(Kanal A)
Kanal B
(Kanal B)
Kanal C
(Kanal C)

Var noga med att ALLTID isolera
använda kablar innan givaren
spänningssätts.