

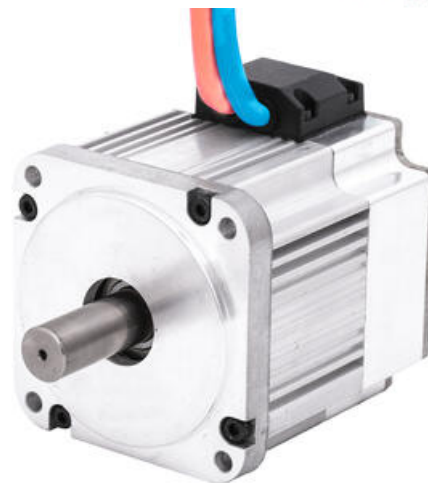
FULLING - BLDC 80MM

FL80BLS84

FL80BLS84 - 3000rpm, 48VDC, 0,9Nm



- Powerful motor in small frame
- Optional gearbox or encoder
- Custom windings available



PRODUCT DESCRIPTION

Fulling BLDC motors have a recognized high performance with large torque available in a small physical size.

For larger volume enquiries it is possible to customize windings, shafts and flanges and with a standard rear shaft, it is easy to combine with an encoder and / or brake.

Utilising an 80mm square frame size, these motors are capable of high output torque in a compact overall size.

Also available with many gearbox options, including worm, spur and planetary.

TECHNICAL DATA

Front size	80x80 mm
Length	84 mm
Max. torque	2.5
Nominal current	7.6 A
Nominal speed	3000 rpm
Nominal torque	0.9
Power	280 W
Supply voltage	48 V DC
Torque constant	0.118 Nm/A
Weight	1.6 kg