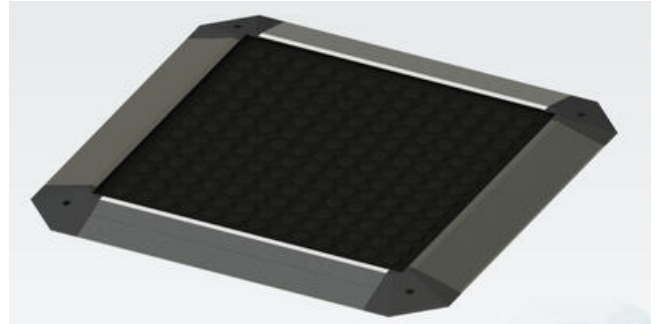


ASO SENTIR MAT

SENTIR mat
2000mm x 1250mm Safety Mat, 24v, 100mA, IP65

- 2000 mm x 1250 mm
- 14 mm High
- IP65 (up to IP67 in some models)



PRODUCT DESCRIPTION

The SENTIR safety mat from ASO Safety Solutions is a pressure-sensitive safety device designed to protect operators working around hazardous machinery and robotic systems. With a low-profile build height of 14 mm and available in sizes up to 2000 mm x 1250 mm, the mat features a durable black PU surface with either studded or ribbed textures for slip resistance. Its actuation force is approximately 150 N, with a rapid response time of <25 ms, ensuring immediate shutdown of connected machinery in the event of human contact. The mat is rated to IP65 (optional IP67) for reliable use in industrial environments, withstands at least 1 million switching cycles, and can be connected in series (up to 10 mats or 10 m²). It operates within a temperature range of -10 °C to +55 °C and offers chemical resistance against common industrial agents, ensuring long service life even in demanding conditions. ASO's safety mats are installed directly on the floor around robots, automated machinery, or hazardous zones to detect operator entry and prevent accidents. For example, in robotics applications, they safeguard workers by ensuring that a robot arm halts if someone steps into the defined danger zone. The mats comply with international safety standards such as EN ISO 13856-1 and EN ISO 13849-1, making them suitable for integration in safety-critical systems. They are commonly paired with ELMON safety relays to monitor actuation and guarantee failsafe performance. Typical applications include use in assembly lines, automated guided vehicles (AGVs), and machine cells where physical barriers are impractical, but reliable presence detection is essential. By combining robust mechanical durability with high responsiveness, the SENTIR mat offers a practical and certified solution for enhancing operator safety in modern automated environments.

TECHNICAL DATA

Actuation force	150N
Dimensions	Max 2000 mm x 1250 mm
Electrical Capacity	24 V 100 mA
Height	14 mm
Inactive Edge	16/42 mm
IP class	IP65, IP67
Maximum number of mat connections	10 mats
Operating temperature	10 °C- +55 °C
Response time	25 ms
Switching Cycles	At least 1 million