

## IDEM STAINLESS STEEL IP69K SAFETY INTERLOCK SWITCH MK1-SS

224001  
 MK1-SS M20 '2NC 1NO'



- Compact with 22mm fixing centres
- Mirror polished finish
- Small 30mm wide x 99mm long
- Replaceable contact blocks
- Standard or flexible actuator

### PRODUCT DESCRIPTION

IDEM's new MK1-SS Compact Safety Interlock switches are designed to provide position interlock detection for small moving guards.

They are designed to fit to the leading edge of sliding, hinged or lift off machine guards.

Mirror polished surface finish to RA10 makes the MK1-SS ideally suited to the food processing and packaging environments.

The rugged Stainless Steel actuator profile is designed to match a cam mechanism to provide a positively operated not easily defeatable interlock mechanism.

The compact body, 30mm wide with 22mm fixing centres and rotatable head make them easy to install where space is restricted.

The rotatable heads have dual actuator entry positions to give up to 8 different entry positions.

A Plastic Flexible Actuator is available for tight radius guards.

Contact blocks are replaceable.

The head can be rotated to give 8 actuator entry positions.

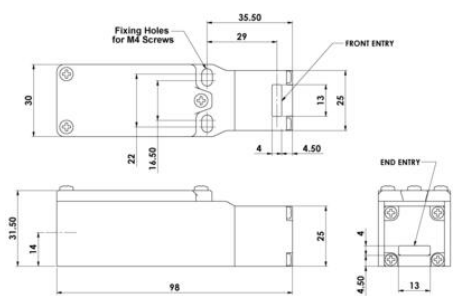
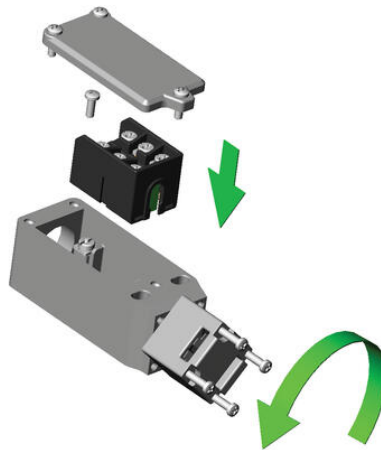
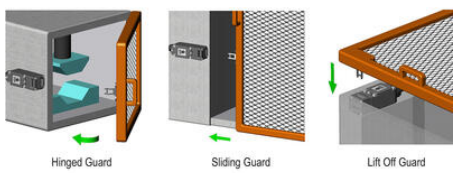


Designed with a removable lid to fit replaceable contact blocks. For extra durability flexible actuators are available.

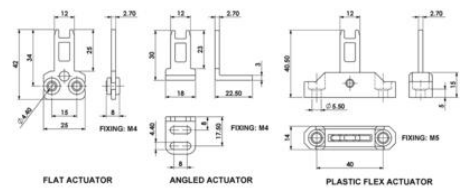
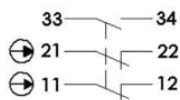
### TECHNICAL DATA

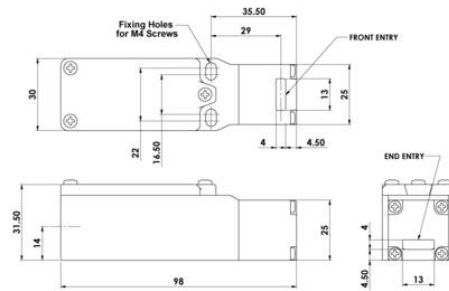
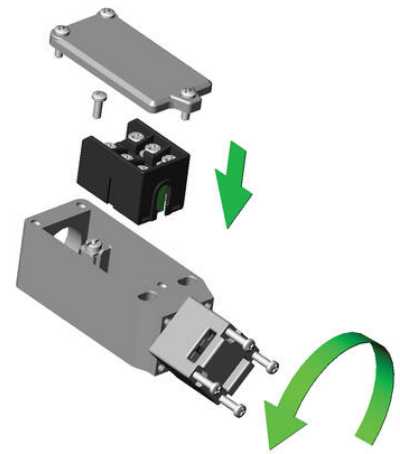
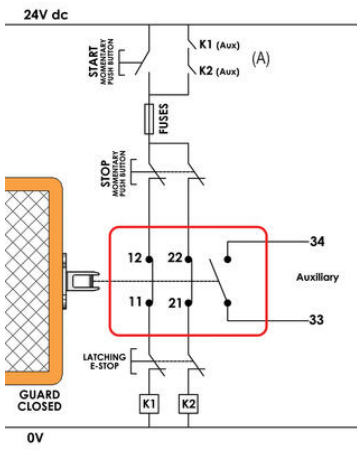
<b>Actuator</b>	Not included
<b>Annual usage</b>	8 cycles per hour/24 hours per day/365 days
<b>Approvals</b>	ISO 14119, EN60947-5-1, EN60204-1, ISO 13849-1, EN62061, UL 508
<b>ATEX approved</b>	No
<b>Conduit entry</b>	M20
<b>Contacts</b>	2NC 1NO
<b>Head material</b>	Stainless steel 316
<b>Housing material</b>	Stainless steel 316
<b>IP class</b>	IP69K
<b>Maximum approach / withdrawal speed</b>	600 mm/s

<b>Mechanical reliability B10d</b>	2.5 x 10 <sup>6</sup> operations at 100mA load
<b>Mounting</b>	2 x M4
<b>MTTFd</b>	356 years
<b>Operating temperature</b>	-25..80°C
<b>PFHd</b>	3.44 x 10 <sup>-8</sup>
<b>PL</b>	e acc. ISO13849-1
<b>Rated insulation voltage</b>	600V ac
<b>SIL</b>	3 acc. EN62061
<b>Thermal current (I<sub>th</sub>)</b>	5 A
<b>Travel for positive opening</b>	6 mm
<b>Withstand voltage</b>	2500V ac



Slow Make Break 2NC 1NO





Slow Make Break 2NC 1NO

