



## ASCO - 2/2 CRYOGENIC VALVE 1/4"- 3/4"

SCE222F003LT

Solenoid valve 2/2 NC 3/4" 230VAC

- Normally Closed
- Media temperature -196 °C to +90 °C
- Working pressure 0 to 9 bar
- Housing in brass



### PRODUCT DESCRIPTION

### TECHNICAL DATA

#### GENERAL DATA

Connection	3/4 BSP
Flow factor / flow coefficient	5,1
IP class	IP65

#### MATERIAL DATA

Material body	Brass
Material of seals	PTFE
Material seat	Brass

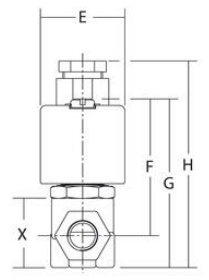
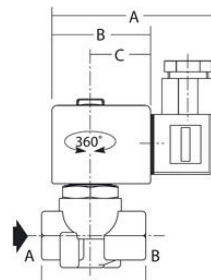
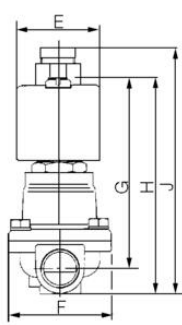
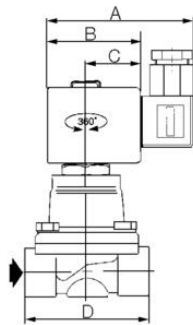
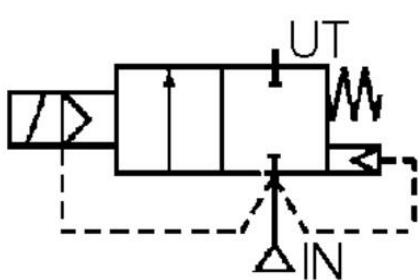
#### TEMPERATURE DATA

Temperature of media from	-196 °C
Temperature of media to	90 °C

#### ADDITIONAL DATA

Close delay	75 ms
Weight	1.2 kg
Power consumption	16.7 W

Throughput	19 mm
Type of valve	Solenoid valve
Response time off	100 ms
Voltage AC	230 V
Temperature operational min	-20 °C
Temperature operational max	50 °C
Differential air pressure max	9 bar
Differential pressure max	9 bar
Differential pressure min	0 bar
Flow max	85 l/min
Function 1	2/2
Function 2	Normally Closed (SPST)
Material flask	Brass
Material piston ring	PTFE flask filled
Material plunger	Stainless steel
Material short-circuit ring	Copper
Material piston rod seal	PTFE
Material spring	Stainless steel
Mounting	Upright, Vertical



Ventil	A	B	C	D	E	F	G	H	J
SCE222E002LT	80	50	30	70	45	59	104	118	131
SCE222F003LT	80	50	30	70	45	59	108	124	137

