



AUER PANEL MOUNTED BUZZER

812500405

Panel mount buzzer, Ø30mm, Black, 12-24 V ac/dc, ESK

- Panel mounted buzzer with loud sound level
- Adjustable volume
- 3 selectable sound signals
- For mounting in drilled holes 22.5 mm or 30.5 mm



PRODUCT DESCRIPTION

Panel mounted buzzer with wide voltage range and high enclosure class, IP65. Excellent when you want to call for extra attention in a panel.

TECHNICAL DATA

Diameter	30 mm
Housing Colour	Black
IP class	IP65
Nominal current max	0.04 A
Nominal current min	0.04 A
Number of optional modules	0
Number of tones	2
Sound level max	65 dB
Sound level min	65 dB
Supply voltage ac/dc max	24 V
Supply voltage ac/dc min	10 V
Temperature operational max	60 °C
Temperature operational min	-25 °C
Terminal connection	2.5 mm ²

Tone frequency max

3500 Hz

Weight

30 g

The sound pressure decreases by 6 dB when doubling the distance; the following distance table is to be seen as indication, as also factors like tone type, wind speed, wind direction, humidity, weather conditions etc. do influence the sound pressure level.

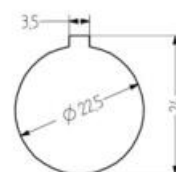
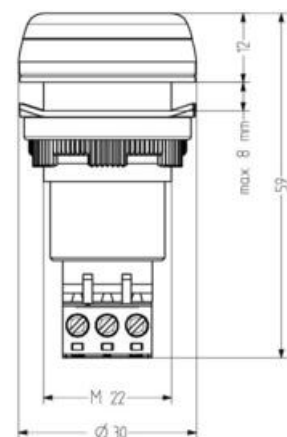
Distance (m)	Sound pressure dB (A)															
1	65	70	75	80	85	90	92	94	96	98	100	102	104	106	108	110
2	59	64	69	74	79	84	86	88	90	92	94	96	98	100	102	104
3	55	60	65	70	75	80	82	84	86	88	90	92	94	96	98	100
5	51	56	61	66	71	76	78	80	82	84	86	88	90	92	94	96
10	45	50	55	60	65	70	72	74	76	78	80	82	84	86	88	90
20	39	44	49	54	59	64	66	68	70	72	74	76	78	80	82	84
30	35	40	45	50	55	60	62	64	66	68	70	72	74	76	78	80
50	31	36	41	46	51	56	58	60	62	64	66	68	70	72	74	76
100																
200																
500																

The sound pressure decreases by 6 dB when doubling the distance

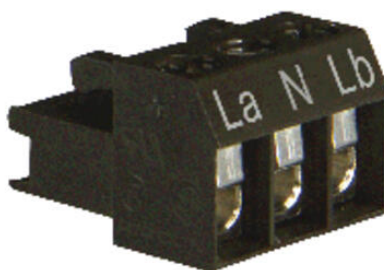
Tone table

Tone on terminal		
La	N	Lb
X	X	pushing tone
X	X	continuous tone

ESK



Justerbar volym
med hjälp av
potentiometer,
(ej ESK.)



The sound pressure decreases by 6 dB when doubling the distance; the following distance table is to be seen as indication, as also factors like tone type, wind speed, wind direction, humidity, weather conditions etc. do influence the sound pressure level.

Distance (m)	Sound pressure dB (A)															
1	65	70	75	80	85	90	92	94	96	98	100	102	104	106	108	110
2	59	64	69	74	79	84	86	88	90	92	94	96	98	100	102	104
3	55	60	65	70	75	80	82	84	86	88	90	92	94	96	98	100
5	51	56	61	66	71	76	78	80	82	84	86	88	90	92	94	96
10	45	50	55	60	65	70	72	74	76	78	80	82	84	86	88	90
20	39	44	49	54	59	64	66	68	70	72	74	76	78	80	82	84
30	35	40	45	50	55	60	62	64	66	68	70	72	74	76	78	80
50	31	36	41	46	51	56	58	60	62	64	66	68	70	72	74	76
100																
200																
500																

The sound pressure decreases by 6 dB when doubling the distance



Justerbar volym
med hjälp av
potentiometer,
(ej ESK.)

