



## CUBIC MULTI SIREN 8-63 TONER SERIES "A"

874060310

Multi-tone alarm sounder, 94mm, 110-120 V ac, ASS-P

- IP66
- Up to 127 dB
- Up to 63 tones
- Can be combined with series "Q"



### PRODUCT DESCRIPTION

Our robust and powerful Multisiren is suitable for industrial, process, fire alarm, marine, etc. With up to 63 different tones, including several international standards, it is a warning product for many applications. The sirens can be mounted directly on the wall or on the ceiling and have cable inlets at the bottom and side.

The siren has three external alarms, as well as automatic synchronization when using multiple sirens. Series A sirens can be combined with other units of series A and Q.

### TECHNICAL DATA

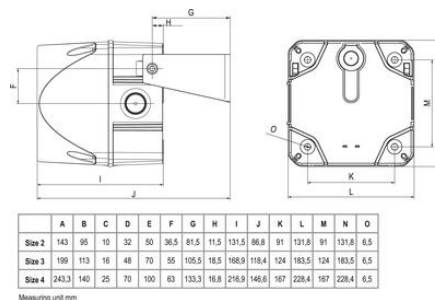
IP class	IP66
Temperature operational max	60 °C
Temperature operational min	-30 °C

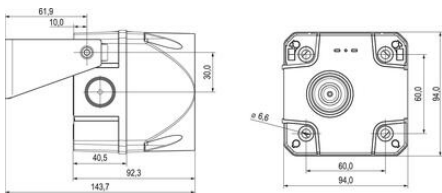


The sound pressure decreases by 6 dB when doubling the distance; the following distance table is to be seen as indication, as also factors like tone type, wind speed, wind direction, humidity, weather conditions etc. do influence the sound pressure level.

Distance (m)	65	70	75	80	85	90	92	94	96	98	100	102	104	106	108	110	112	114	116	118	120
1	59	64	69	74	79	84	86	88	90	92	94	96	98	100	102	104	106	108	110	112	114
2	55	60	65	70	75	80	82	84	86	88	90	92	94	96	98	100	102	104	106	108	110
3	51	56	61	66	71	76	78	80	82	84	86	88	90	92	94	96	98	100	102	104	106
5	45	50	55	60	65	70	72	74	76	78	80	82	84	86	88	90	92	94	96	98	100
10	39	44	49	54	59	64	66	68	70	72	74	76	78	80	82	84	86	88	90	92	94
20	35	40	45	50	55	60	62	64	66	68	70	72	74	76	78	80	82	84	86	88	90
30	36	41	46	51	56	61	63	65	67	69	71	73	75	77	79	81	83	85	87	89	91
40	40	45	50	55	60	65	67	69	71	73	75	77	79	81	83	85	87	89	91	93	95
50	45	50	55	60	65	70	72	74	76	78	80	82	84	86	88	90	92	94	96	98	100
60	48	53	58	63	68	73	75	77	79	81	83	85	87	89	91	93	95	97	99	101	103
80	52	57	62	67	72	77	79	81	83	85	87	89	91	93	95	97	99	101	103	105	107
100	55	60	65	70	75	80	82	84	86	88	90	92	94	96	98	100	102	104	106	108	110
120	57	62	67	72	77	82	84	86	88	90	92	94	96	98	100	102	104	106	108	110	112
150	60	65	70	75	80	85	87	89	91	93	95	97	99	101	103	105	107	109	111	113	115
200	64	69	74	79	84	89	91	93	95	97	99	101	103	105	107	109	111	113	115	117	119
300	69	74	79	84	89	94	96	98	100	102	104	106	108	110	112	114	116	118	120	122	124

The sound pressure decreases by 6 dB when doubling the distance

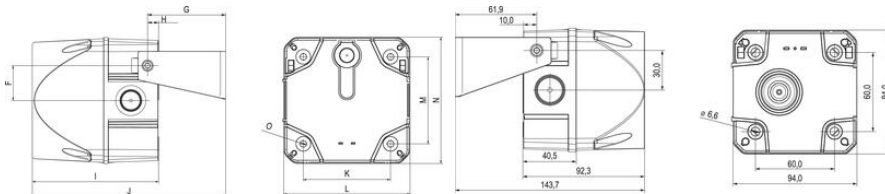




The sound pressure decreases by 6 dB when doubling the distance; the following distance table is to be seen as indication, as also factors like tone type, wind speed, wind direction, humidity, weather conditions etc. do influence the sound pressure level.

Distance (m)	Sound pressure dB (A)																			
1	65	70	75	80	85	90	92	94	96	98	100	102	104	106	108	110	112	114	116	120
2	59	64	69	74	79	84	86	88	90	92	94	96	98	100	102	104	106	108	110	114
3	55	60	65	70	75	80	82	84	86	88	90	92	94	96	98	100	102	104	106	110
5	51	56	61	66	71	76	78	80	82	84	86	88	90	92	94	96	98	100	102	106
10	45	50	55	60	65	70	72	74	76	78	80	82	84	86	88	90	92	94	96	100
20	39	44	49	54	59	64	66	68	70	72	74	76	78	80	82	84	86	88	90	94
30	35	40	45	50	55	60	62	64	66	68	70	72	74	76	78	80	82	84	86	90
50		36	41	46	51	56	58	60	62	64	66	68	70	72	74	76	78	80	82	86
100			40	45	50	52	54	56	58	60	62	64	66	68	70	72	74	76	78	80
200				39	44	46	48	50	52	54	56	58	60	62	64	66	68	70	72	74
500					38	40	42	44	46	48	50	52	54	56	58	60	62	64	66	

The sound pressure decreases by 6 dB when doubling the distance



	A	B	C	D	E	F	G	H	I	J	K	L	M	N	O
Size 2	143	95	10	32	50	36.5	81.5	11.5	131.5	86.8	91	131.8	91	131.8	6.5
Size 3	199	113	16	48	70	55	105.5	18.5	168.9	118.4	124	183.5	128	183.5	6.5
Size 4	243.3	140	25	70	100	83	133.3	16.8	216.9	146.6	167	228.4	167	228.4	6.5

Measuring unit mm