

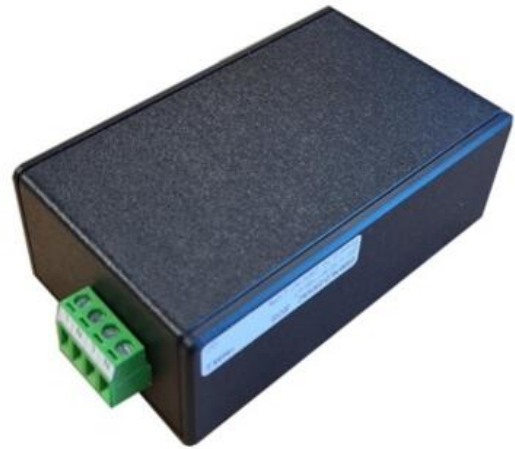
GSM-TMM SIMPLE SMS MODULE

GSM-TMM

16489.2

GSM-TMM, Auto Send SMS Module, 10...30V dc, 24V ac

- SMS Send on Power Up
- 230V AC and 12VDC/24VADC versions available
- Simple programming
- Supporting LTE-M, NB-IOT, 2G
- LED status indication



PRODUCT DESCRIPTION

Simple compact SMS device that sends a single SMS to 1-5 recipients on power up, with or without confirmation.

The GSM-TMM (Trigger Message Module) can be wired in series or parallel with any powered device, such as beacon, sounders or switched output. The unit can be programmed via USB (no external power required for programming)

Standard micro SIM, SMA antenna connection.

TECHNICAL DATA

GENERAL DATA

Number of inputs	1
Supply voltage	10..30V dc; 24V ac $\pm 10\%$
Current consumption	12V-170mA; 24V-85mA; 24VAC ~210mA
Mounting	Direct mount
GPS	No
Electromagnetic compatibility	EN55011, EN61326-1
Operating temperature from	-30 °C
Operating temperature to	70 °C

DIMENSIONS

Length	106 mm
Width	54 mm
Height	39 mm

Weight	147 g
--------	-------

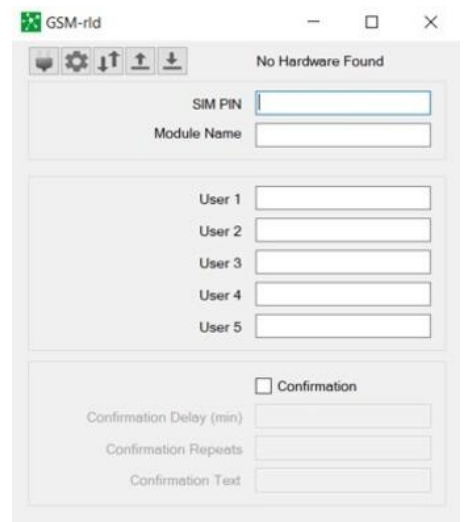
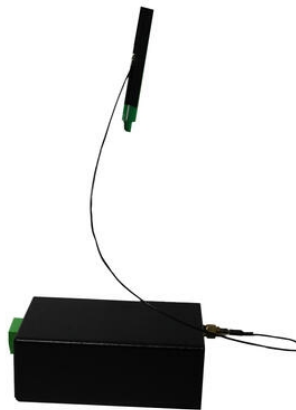
CONNECTIONS

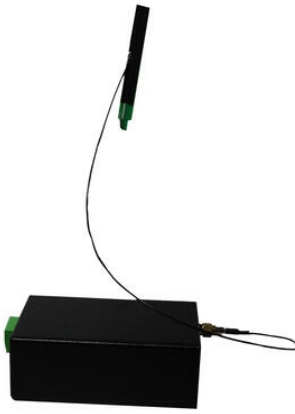
Connection type	Pluggable
Cross section single wire from	0.2 mm ²
Cross section single wire to	2.5 mm ²
Stripping length	6 mm

GSM/GPS DATA

2G	Quad-band GSM bands: 850, 900, 1800 and 1900 MHz
3G	LTE CAT-M: B1/B2/B3/B4/B5/B8/B12/B13/B14/B18/B19/B20/B25/B26/B27/B28/B66/B85
SIM card	Nano-SIM
Antenna GSM	50 Ohm, SMA-plug

Tariff code	85176990
Pack size	1
Country of origin	NL
DIN-VDE Spec	Low Voltage Directive (LVD) 2014/35/EU, according requirements of EN 62477-1 Directive 2014/30/EU, in compliance with EN 55011 and EN 61326-1, RED 2014/53/EU
IP class	IP20





GSM-rid

No Hardware Found

SIM PIN

Module Name

User 1

User 2

User 3

User 4

User 5

Confirmation

Confirmation Delay (min)

Confirmation Repeats

Confirmation Text