

HG-TAJ40SC TORQUE HINGE

HG-TAJ40SC20

Stainless Steel Torque Hinge, 3.5~4.5Nm Assist Torque
 Tilt, 3.5Nm Click Release Torque Swivel

- Can be positioned with both tilt and swivel movement
- Adjustable Retaining Torque
- Has a Centre Hole for Cable Management



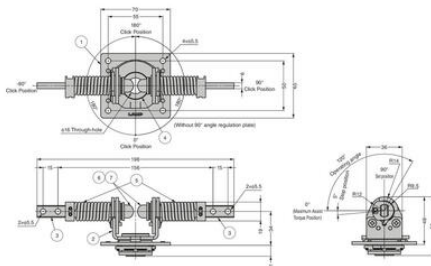
PRODUCT DESCRIPTION

The HG-TAJ40SC20 is a two-axis stainless steel torque hinge designed for horizontal mounting on lids, panels, or monitors, enabling precise control along both tilt and swivel axes. In the tilt direction, it offers assisted opening up to 120°, thanks to a built-in spring, and retains angles via adjustable torque, allowing smooth support through the first 120° of travel. The swivel axis provides ±180° range with tactile click-stop positions at 0°, ±90°, and ±180°, delivering stable “free-stop” positioning through friction. It has survived rigorous durability testing. The hinge’s dimensions (198 × 59 × 16 mm, 480 g) include a central cable pass-through hole, and it operates reliably between -10 °C to +50 °C, using M5 screws for secure mounting.

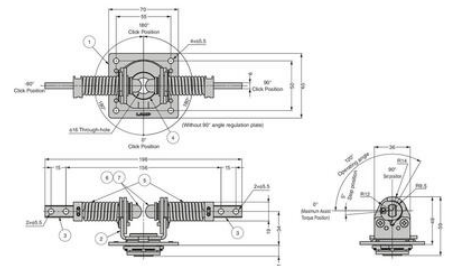
In practical applications, the HG-TAJ40SC20 shines in environments that demand precise and controlled movement on two axes think tilted display screens, analytical instrument lids, access panels in factory automation, and medical device enclosures. Its spring-assisted tilt action reduces operator fatigue, while the detent-style swivel resistance and free-stop friction ensure components stay securely at any chosen angle. This hinge embodies Sugatsune’s Motion Design Tec philosophy by combining Assist Motion, Free-Stop Motion, and Detent Motion in a single unit providing intuitive, ergonomic, and safe operation in demanding technical environments.

TECHNICAL DATA

Material	Stainless steel, PVC
Surface finish	Barrel Polished
Swivel Direction Assist Torque	3.5±20%
Temperature range	-10°C~50°C
Tilt Direction Assist Torque	3.5~4.5Nm
Weight	480 g



No.	Part Name	Material	Finish
①	Fixed Board	Stainless Steel (SUS304)	Barrel Polished
②	Base	Stainless Steel (SUS430)	Barrel Polished
③	Tilt Shaft	Stainless Steel	-
④	Swivel Shaft	(SUS303)	
⑤	Tilt Spring	Stainless Steel	-
⑥	Torque Adjustment Nut M6		
⑦	Cap	Polyvinyl Chloride Plastic (PVC)	



No.	Part Name	Material	Finish
①	Fixed Board	Stainless Steel (SUS304)	Barrel Polished
②	Base	Stainless Steel (SUS430)	Barrel Polished
③	Tilt Shaft	Stainless Steel (SUS303)	-
④	Swivel Shaft		
⑤	Tilt Spring	Stainless Steel	-
⑥	Torque Adjustment Nut M6		
⑦	Cap	Polyvinyl Chloride Plastic (PVC)	