

## HG-JH210 LIFT ASSIST HINGE

HG-JH210

Stainless Steel Hinge with Lift Assist and Damper,  
Opening Angle up to 110°

- Lift Assist
- Built in Damper
- Built-in helical torsion spring makes lid feel lighter when opening.



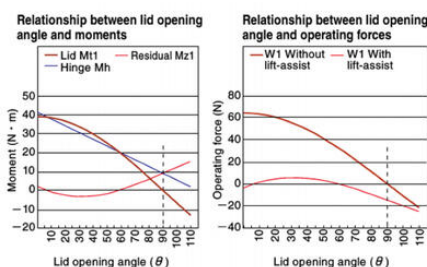
### PRODUCT DESCRIPTION

The HG-JH210 is a robust stainless-steel lift-assist hinge designed for industrial-grade access panels, doors, or lids where controlled movement is essential. With a helical torsion spring that provides lift-assist functionality, reducing the effort needed to raise heavy lids. It includes a built-in damper effective from about 30° of opening, ensuring a slow, soft-close action and preventing slamming. Each hinge offers a maximum torque of 7Nm with  $\pm 10\%$  tolerance, supports up to 110° of opening angle, has passed rigorous 30,000-cycle durability testing, and mounts with M8 fasteners.

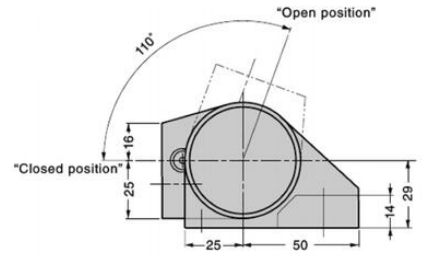
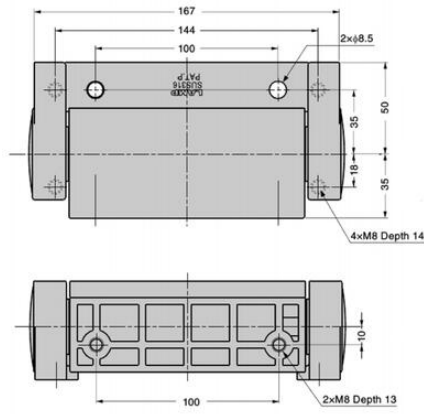
In practice, the HG-JH210 is ideal for heavy-duty industrial environments, such as engine bays, machinery inspection panels, and equipment cabinets, where safety, precision, and longevity are critical. Its combination of lift-assist and damping motions aligns with Sugatsune's core Motion Design Tec philosophy, which promotes intuitive, smooth hardware interaction. The corrosion-resistant stainless construction and polished finish make it well-suited for marine, pharmaceutical, or food-grade settings. Thanks to its high torque capacity and soft-closing mechanism, operators can effortlessly open and close heavy lids without sudden movement or impact.

### TECHNICAL DATA

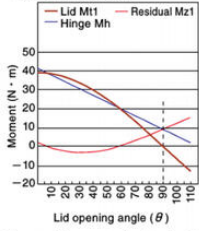
Material	Stainless steel
Operating Range	0°~110°
Surface finish	Polished
Weight	2350 g



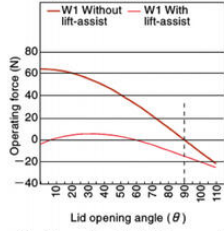
The graph is an example when L=60cm, W1=12kg, and two HG-JH210 are used. At this time, the maximum load torque of built-in damper is  $7 \times 2 = 14 \text{ N} \cdot \text{m}$  (142.8 kgf · cm). Damper works when the residual moment is 14N · m or less. (Room temperature)



Relationship between lid opening angle and moments



Relationship between lid opening angle and operating forces



The graph is an example when  $L=60\text{cm}$ ,  $W1=12\text{kg}$ , and two HG-JH210 are used. At this time, the maximum load torque of built-in damper is  $7 \times 2 = 14\text{N} \cdot \text{m}$  (142.8  $\text{kgf} \cdot \text{cm}$ ). Damper works when the residual moment is  $14\text{N} \cdot \text{m}$  or less. (Room temperature)

