

HG-PA LIFT ASSIST HINGE

HG-PA231-15

Lift Assist Hinge Inside Mount, 15N Torque, Stainless Steel, 35° Peak Torque Angle

- Various Adjustable Torques
- Lift Assist
- Soft Close



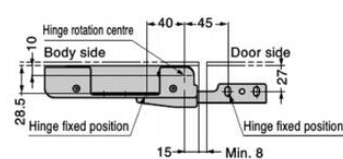
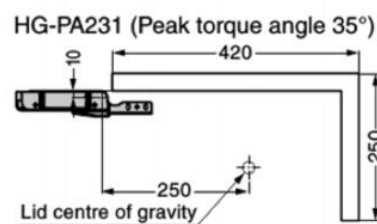
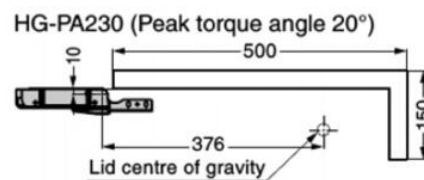
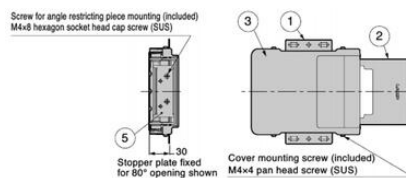
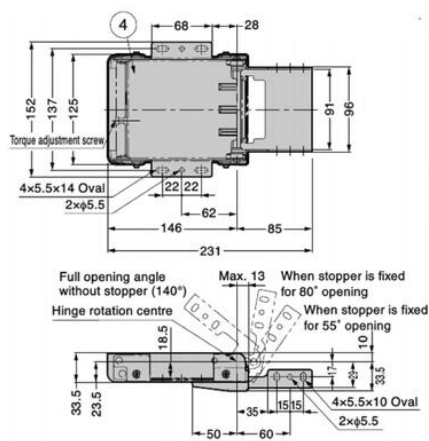
PRODUCT DESCRIPTION

Sugatsune's HG-PA lift-assist hinges are precision-engineered to significantly ease the operation of heavy lids or panels by featuring integrated spring tension and soft-closing damping in a compact stainless-steel package. These hinges provide adjustable torque, typically in the range of $\pm 5\text{--}11\%$ depending on the model, and deliver smooth, quiet motion that prevents slamming during closure. Available in various configurations, including surface-mounted, inside-mount, and different torque ratings, the HG-PA series uses 430 or 304-grade stainless steel for durability, with models like the HG-PA202-2 offering a maximum damper torque around 2 Nm, adjustable via a set screw for precision tuning.

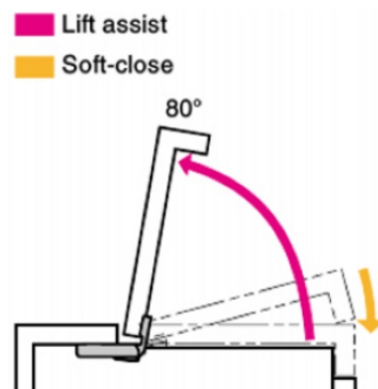
In practical applications, HG-PA hinges are ideal wherever heavy or bulky panels need effortless, controlled opening and closing. They excel in marine and industrial equipment, medical and laboratory cabinetry, overhead storage lids, and specialist enclosures, eliminating the bulk and gas-leak risks of traditional gas springs. Their soft-close function enhances user safety and product longevity, making them perfect for high-usage environments like equipment cases, service access panels, or kitchen lift-up flaps. With their adjustable torque and clean, rust-resistant finishes, HG-PA hinges deliver both ergonomic performance and reliable, maintenance-free operation.

TECHNICAL DATA

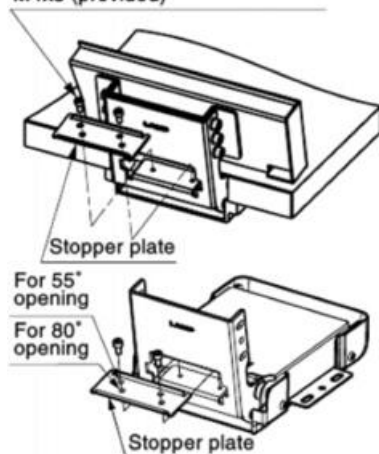
Feature	Peak Torque Angle 35°
Material	Stainless steel, Steel, PP, POM
Torque	15N \pm 10%
Weight	1296 g



No.	Part Name	Material / Colour
①	Base A	Stainless Steel (SUS430)
②	Base B	
③	Cover	PP/Light Grey
④	Case	Stainless Steel (SUS430)
⑤	Stopper Plate	
-	Slider	POM
-	Spring	Steel (SWO)



Opening angle can be limited to 55° or 80° with the included stopper plate.
Hexagon socket head cap screw M4x8 (provided)



*Opening angle can be limited to 55° or 80° with the included stopper plate.