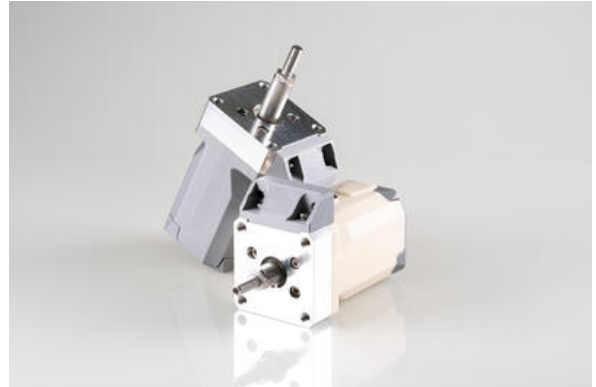


SMELA LITEECO ACTUATOR

LE48.A

Smela actuator 125N

- Up to 80% space saving over conventional systems
- Energy saving - up to 75% over pneumatics
- Long service life thanks to sealed system and serviceable components
- Up to 800N of force
- Up to 1200 mm/s speed



PRODUCT DESCRIPTION

Smela Actuators are one of the most compact alternatives to pneumatic cylinders.

Featuring high force and dynamics with integrated encoders for precise repeatable control, they save up to 80% on installation space when compared to other electromechanical products.

Controlled with a motion controller enables high accuracy with repeatable positioning through configurable motion profiles.

The profiles are set in the motion controller which gives the complete system complete control and allows for central monitoring at any point in the process.

TECHNICAL DATA

| | |
|--|------------------------|
| Acceleration | 60 m/s ² |
| Backlash | 0.02 mm |
| Max internal temperature rise | 90 °C |
| Max phase current | 12 A |
| Max. speed | 1200 mm/s |
| Maximum force (static) | 125 N |
| Nominal force (good thermal coupling) | 62.5 N |
| Nominal force (poor thermal coupling) | 41 N |
| Nominal phase current (good thermal coupling) | 5 A |
| Nominal phase current (poor thermal coupling) | 2.9 A |
| Nominal voltage | 24 to 48 vDC |
| Operating temperature | +5 to +40 °C |
| Position sensor system | incremental, hall, SSI |
| Positioning time | 65 ms |

| | |
|-------------------|-------|
| Stroke max | 56 mm |
| Weight | 440 g |