

## ACTUONIX - MINIATURE LINEAR ACTUATOR P16

P16-200-22-12-S

12V, 200mm stroke, up to 50N force with limit switches

- Up to 300N force
- Up to 46mm/s speed
- From 50mm to 200mm stroke
- 12v dc with potentiometer or limit switches



### PRODUCT DESCRIPTION

Actuonics P16 actuators are complete miniature actuators with sophisticated positioning control through end position sensors or via potentiometers. Featuring a compact side by side design with a planetary gearbox, these units offer higher speeds, higher forces and longer life than their other units.

Control Options for Miniature Controller P16:

P16-S series: End switch

S variant has factory set end switches that turn off the power when the actuator reaches 0.5mm of the end of the total stroke.

P16-P series: Position feedback via potentiometer

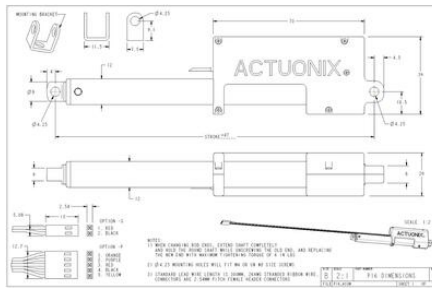
The P variant has no built-in control unit, but provides an analogue feedback channel that can be fed into an external controller as a positional reference.

### TECHNICAL DATA

Back drive force	75 N
Duty cycle	20 %
IP class	IP54
Nominal speed, no load	46 mm/s
Ratio	22:1
Sound level	62 dB
Static load max	50 N
Stroke	200 mm
Supply voltage	12 V DC
Temperature operational max	50 °C
Temperature operational min	-10 °C
Weight	140 g

**P16-SS-GG-VV-C**

Feature	Options
<b>SS:</b> Stroke	<b>50, 100, 150, 200</b> (mm)
<b>GG:</b> Gear reduction ratio (refer to load curves above)	<b>22, 64, 256</b> :1 (lower ratios are faster but push less force, and vice versa)
<b>VV:</b> Voltage	<b>12</b> Volts DC
<b>C:</b> Controller	<b>P</b> Potentiometer Feedback <b>S</b> Limit Switches



**P16-SS-GG-VV-C**

Feature	Options
<b>SS:</b> Stroke	<b>50, 100, 150, 200</b> (mm)
<b>GG:</b> Gear reduction ratio (refer to load curves above)	<b>22, 64, 256</b> :1 (lower ratios are faster but push less force, and vice versa)
<b>VV:</b> Voltage	<b>12</b> Volts DC
<b>C:</b> Controller	<b>P</b> Potentiometer Feedback <b>S</b> Limit Switches

