

ACTUONIX - MINIATURE LINEAR ACTUATOR P16

P16-200-22-12-P

12V, 200mm stroke, up to 50N force with potentiometer

- Up to 300N force
- Up to 46mm/s speed
- From 50mm to 200mm stroke
- 12v dc with potentiometer or limit switches



PRODUCT DESCRIPTION

Actuonics P16 actuators are complete miniature actuators with sophisticated positioning control through end position sensors or via potentiometers. Featuring a compact side by side design with a planetary gearbox, these units offer higher speeds, higher forces and longer life than their other units.

Control Options for Miniature Controller P16:

P16-S series: End switch

S variant has factory set end switches that turn off the power when the actuator reaches 0.5mm of the end of the total stroke.

P16-P series: Position feedback via potentiometer

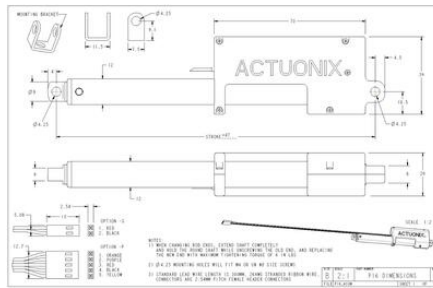
The P variant has no built-in control unit, but provides an analogue feedback channel that can be fed into an external controller as a positional reference.

TECHNICAL DATA

Back drive force	75 N
Duty cycle	20 %
IP class	IP54
Nominal speed, no load	46 mm/s
Ratio	22:1
Sound level	62 dB
Static load max	50 N
Stroke	200 mm
Supply voltage	12 V DC
Temperature operational max	50 °C
Temperature operational min	-10 °C
Weight	140 g

P16-SS-GG-VV-C

Feature	Options
SS: Stroke	50, 100, 150, 200 (mm)
GG: Gear reduction ratio (refer to load curves above)	22, 64, 256 :1 (lower ratios are faster but push less force, and vice versa)
VV: Voltage	12 Volts DC
C: Controller	P Potentiometer Feedback S Limit Switches



P16-SS-GG-VV-C

Feature	Options
SS: Stroke	50, 100, 150, 200 (mm)
GG: Gear reduction ratio (refer to load curves above)	22, 64, 256 :1 (lower ratios are faster but push less force, and vice versa)
VV: Voltage	12 Volts DC
C: Controller	P Potentiometer Feedback S Limit Switches

