

## ACTUONIX - MINIATURE LINEAR ACTUATOR L16

L16-50-150-6-R  
12V, 50mm stroke, up to 200N force, with RC servo control



- Up to 200N force
- Up to 32mm/s speed
- From 50mm to 140mm stroke
- 12v dc with potentiometer or limit switches
- 6V RC controller options

### PRODUCT DESCRIPTION

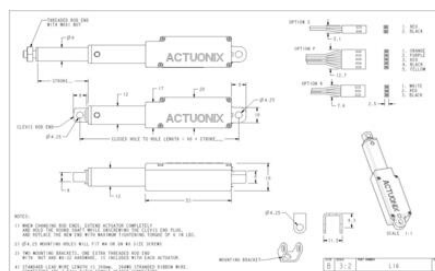
Actuonix Motion Devices' unique line of Miniature Linear Actuators enables a new generation of motion-enabled product designs, with capabilities that have never before been combined in a device of this size. These linear actuators are a superior alternative to designing your own push/pull mechanisms. The L16 actuators are complete, self contained linear motion devices with position feedback for sophisticated position control capabilities, end of stroke limit switches for simple two position automation, or RC servo. Several gear ratios are available to give you varied speed/force configurations.

### TECHNICAL DATA

Back drive force	102 N
Duty cycle	20 %
IP class	IP54
Max power	200 N
Nominal speed, no load	8 mm/s
Ratio	150:1
Sound level	60 dB
Stroke	50 mm
Temperature operational max	50 °C
Temperature operational min	-10 °C
Voltage dc	6 V

#### L16-SS-GG-VV-C

Feature	Options
<b>SS:</b> Stroke	50, 100, 140 (mm)
<b>GG:</b> Gear reduction ratio (refer to load curves above)	35, 63, 150 (lower ratios are faster but push less force, and vice versa)
<b>VV:</b> Voltage	12 vdc or 6 vdc (-R only)
<b>C:</b> Controller	P Potentiometer Feedback S Limit Switches R RC Linear Servo



#### L16-SS-GG-VV-C

Feature	Options
<b>SS:</b> Stroke	50, 100, 140 (mm)
<b>GG:</b> Gear reduction ratio (refer to load curves above)	35, 63, 150 (lower ratios are faster but push less force, and vice versa)
<b>VV:</b> Voltage	12 vdc or 6 vdc (-R only)
<b>C:</b> Controller	P Potentiometer Feedback S Limit Switches R RC Linear Servo

