

ACTUONIX - MINIATURE LINEAR ACTUATOR L16

L16-50-35-6-R
12V, 50mm stroke, up to 50N force, with RC servo control



- Up to 200N force
- Up to 32mm/s speed
- From 50mm to 140mm stroke
- 12v dc with potentiometer or limit switches
- 6V RC controller options

PRODUCT DESCRIPTION

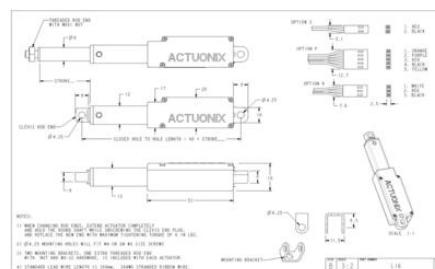
Actuonix Motion Devices' unique line of Miniature Linear Actuators enables a new generation of motion-enabled product designs, with capabilities that have never before been combined in a device of this size. These linear actuators are a superior alternative to designing your own push/pull mechanisms. The L16 actuators are complete, self contained linear motion devices with position feedback for sophisticated position control capabilities, end of stroke limit switches for simple two position automation, or RC servo. Several gear ratios are available to give you varied speed/force configurations.

TECHNICAL DATA

| | |
|-----------------------------|---------|
| Back drive force | 31 N |
| Duty cycle | 20 % |
| IP class | IP54 |
| Max power | 50 N |
| Nominal speed, no load | 32 mm/s |
| Ratio | 35:1 |
| Sound level | 60 dB |
| Stroke | 50 mm |
| Temperature operational max | 50 °C |
| Temperature operational min | -10 °C |
| Voltage dc | 6 V |

L16-SS-GG-VV-C

| Feature | Options |
|--|--|
| SS: Stroke | 50, 100, 140 (mm) |
| GG: Gear reduction ratio (refer to load curves above) | 35, 63, 150 (lower ratios are faster but push less force, and vice versa) |
| VV: Voltage | 12 vdc or 6 vdc (-R only) |
| C: Controller | P Potentiometer Feedback S Limit Switches R RC Linear Servo |



L16-SS-GG-VV-C

| Feature | Options |
|--|--|
| SS: Stroke | 50, 100, 140 (mm) |
| GG: Gear reduction ratio (refer to load curves above) | 35, 63, 150 (lower ratios are faster but push less force, and vice versa) |
| VV: Voltage | 12 vdc or 6 vdc (-R only) |
| C: Controller | P Potentiometer Feedback S Limit Switches R RC Linear Servo |

