

## ACTUONIX - MINIATURE LINEAR ACTUATOR L12

L12-10-210-12-S

12V, 10mm stroke, up to 80N force with limit switches

- Up to 80N force
- Up to 25mm/s speed
- From 10mm to 100mm stroke
- 12v dc with potentiometer or limit switches
- 6V RC controller options



### PRODUCT DESCRIPTION

Actuonix Motion Devices unique line of Miniature Linear Actuators enables a new generation of motion-enabled product designs, with capabilities that have never before been combined in a device of this size. These small linear actuators are a superior alternative to designing with awkward gears, motors, servos, and linkages.

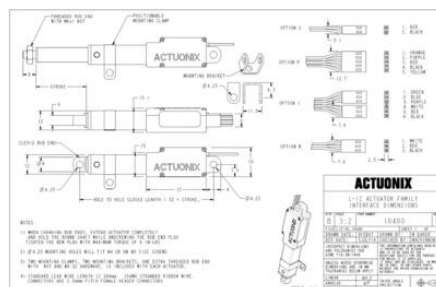
Actuonix's L series of micro linear actuators combine the best features of our existing micro actuator families into a highly flexible, configurable, and compact platform with an optional sophisticated on-board microcontroller. The first member of the L series, the L12, is an axial design with a powerful drive-train and a rectangular cross section for increased rigidity. But by far the most attractive feature of this actuator is the broad spectrum of available configurations.

### TECHNICAL DATA

Back drive force	45 N
Duty cycle	20 %
Force max	80 N
IP class	IP54
Nominal speed, no load	6.5 mm/s
Ratio	210:1
Sound level	55 dB
Static load max	80 N
Stroke	10 mm
Supply voltage	12 V DC
Temperature operational max	50 °C
Temperature operational min	-10 °C
Weight	28 g

**L12-SS-GG-VV-C**

<i>feature</i>	<i>Options</i>
<b>SS:</b> Stroke Length	<b>10, 30, 50, 100</b>
<b>GG:</b> Gear reduction ratio (refer to load curves above)	<b>50, 100, 210</b> (lower ratios are faster but push less force, and vice versa)
<b>VV:</b> Voltage	<b>6, 12</b> (DC volts)
<b>C:</b> Controller	<b>S</b> Limit Switches <b>P</b> Potentiometer Feedback <b>I</b> Integrated Controller <b>R</b> RC Servo Integrated Controller



**L12-SS-GG-VV-C**

feature	Options
<b>SS:</b> Stroke Length	<b>10, 30, 50, 100</b>
<b>GG:</b> Gear reduction ratio (refer to load curves above)	<b>50, 100, 210</b> (lower ratios are faster but push less force, and vice versa)
<b>VV:</b> Voltage	<b>6, 12</b> (DC volts)
<b>C:</b> Controller	<b>S</b> Limit Switches <b>P</b> Potentiometer Feedback <b>I</b> Integrated Controller <b>R</b> RC Servo Integrated Controller

