

## ACTUONIX - MINIATURE LINEAR ACTUATOR L12

L12-100-100-12-P

12V, 100mm stroke, up to 42N force with potentiometer

- Up to 80N force
- Up to 25mm/s speed
- From 10mm to 100mm stroke
- 12v dc with potentiometer or limit switches
- 6V RC controller options



### PRODUCT DESCRIPTION

Actuonix Motion Devices unique line of Miniature Linear Actuators enables a new generation of motion-enabled product designs, with capabilities that have never before been combined in a device of this size. These small linear actuators are a superior alternative to designing with awkward gears, motors, servos, and linkages.

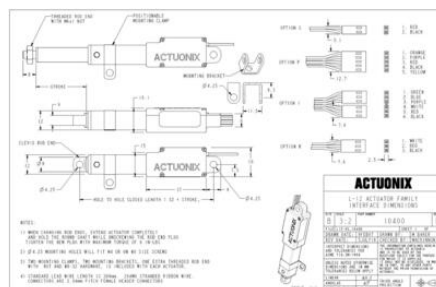
Actuonix's L series of micro linear actuators combine the best features of our existing micro actuator families into a highly flexible, configurable, and compact platform with an optional sophisticated on-board microcontroller. The first member of the L series, the L12, is an axial design with a powerful drive-train and a rectangular cross section for increased rigidity. But by far the most attractive feature of this actuator is the broad spectrum of available configurations.

### TECHNICAL DATA

|                             |         |
|-----------------------------|---------|
| Back drive force            | 22 N    |
| Duty cycle                  | 20 %    |
| Force max                   | 42 N    |
| IP class                    | IP54    |
| Nominal speed, no load      | 13 mm/s |
| Ratio                       | 100:1   |
| Sound level                 | 55 dB   |
| Static load max             | 42 N    |
| Stroke                      | 100 mm  |
| Supply voltage              | 12 V DC |
| Temperature operational max | 50 °C   |
| Temperature operational min | -10 °C  |
| Weight                      | 56 g    |

**L12-SS-GG-VV-C**

| <i>feature</i>   | <i>Options</i>  |
|--|---|
| <b>SS:</b> Stroke Length                                     | <b>10, 30, 50, 100</b>  |
| <b>GG:</b> Gear reduction ratio (refer to load curves above) | <b>50, 100, 210</b><br>(lower ratios are faster but push less force, and vice versa)  |
| <b>VV:</b> Voltage   | <b>6, 12</b><br>(DC volts)  |
| <b>C:</b> Controller   | <b>S</b> Limit Switches<br><b>P</b> Potentiometer Feedback<br><b>I</b> Integrated Controller<br><b>R</b> RC Servo Integrated Controller |



**L12-SS-GG-VV-C**

| <i>feature</i>   | <i>Options</i>  |
|--|---|
| <b>SS:</b> Stroke Length                                     | <b>10, 30, 50, 100</b>  |
| <b>GG:</b> Gear reduction ratio (refer to load curves above) | <b>50, 100, 210</b><br>(lower ratios are faster but push less force, and vice versa)  |
| <b>VV:</b> Voltage   | <b>6, 12</b><br>(DC volts)  |
| <b>C:</b> Controller   | <b>S</b> Limit Switches<br><b>P</b> Potentiometer Feedback<br><b>I</b> Integrated Controller<br><b>R</b> RC Servo Integrated Controller |

