

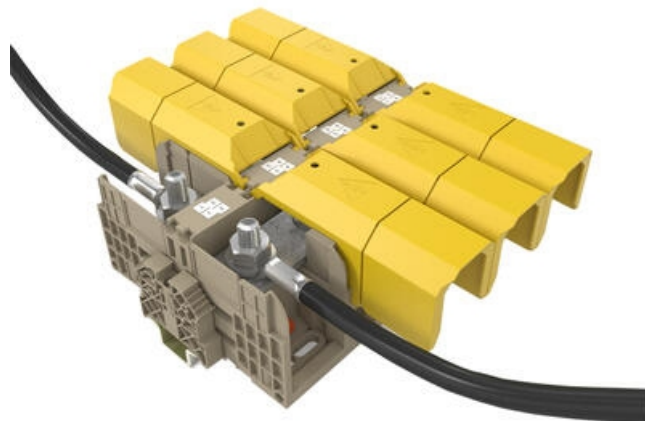
## HIGH-POWER STUD TERMINALS - HSKG 35-300MM<sup>2</sup>

HSKG

17024.2

HSKG 185/M12/B/B, 185mm<sup>2</sup> Dual M12 stud terminal

- Dual stud connection
- Direct & TS35 mount
- IP20 with Gull Wing Covers fitted
- Material polyamide 6.6
- Fire-resistance class V0



### PRODUCT DESCRIPTION

The newest generation of stud terminals from CONTA-CLIP offers secure connections for all high power conductors.

The HSKG stud terminals are available with stud sizes of with M6, M8, M10, M12 and rated current is from 125 A to 520A at a rated voltage of 1000 V. For higher currents the terminals can be easily and safely cross connected by snapping out a section of the built in partition plate.

The wire connection range is from 2.5 mm<sup>2</sup> to 300 mm<sup>2</sup>. and crimped lugs are used to fit the cables to the busbar using the hexagonal nut with built in washer.

When used together with the ADH hinged covers, the HSKG stud terminals provide outstanding finger and touch protection. The ADH cover is easy to mount; it simply snaps into the side walls of the stud terminals as it is closed.

In this quick and reliable way, touch-safe protection of the terminal points is always guaranteed.

Added features include -

- Measuring Point located on the ADH covers to allow probes to be inserted without exposing the conductor.
- Direct or DIN Rail Mount
- Interlocking housings for improved stability
- Cross connectable

## TECHNICAL DATA

### GENERAL DATA

Rated wire cross section	185 mm <sup>2</sup>
Colour	Beige
Rated voltage IEC	1000 V
Rated current IEC	353 A
Mounting	TS 35
Rated impulse voltage	8 kV
Overvoltage category	III
Contamination degree	3
Approvals	UL, GL, cUL, KEMA KUR, EAC

### DIMENSIONS

Length	164 mm
Width	55 mm
Height TS 35/7.5	78 mm

Height with TW/ADH	90 mm
Length with TW/ADH	288 mm
Contact clamping area	≤ 185 mm <sup>2</sup>

## CONNECTION DATA

Connections	2
Number of levels	1
Stud size	M 12
Rated wire cross section from (AWG)	8
Rated wire cross section to (AWG)	500 Kcmil
Torque min	14
Torque max	31
DIN 46234 / 1 cable lug per side, min.	10 mm <sup>2</sup>
DIN 46234 / 1 cable lug per side, max.	240 mm <sup>2</sup>
DIN 46234 / 2 cable lugs per side, min.	10 mm <sup>2</sup>
DIN 46234 / 2 cable lugs per side, max.	185 mm <sup>2</sup>
DIN 46235: 1 cable lug per side, min.	25 mm <sup>2</sup>
DIN 46235: 1 cable lug per side, max.	240 mm <sup>2</sup>
DIN 46235: 2 cable lugs per side, min.	25 mm <sup>2</sup>
DIN 46235: 2 cable lugs per side, max.	185 mm <sup>2</sup>

## MATERIALS

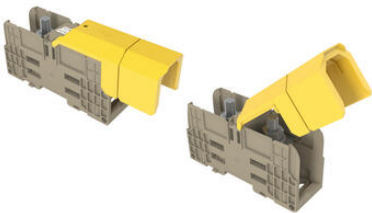
Insulation material	Polyamide 6.6
Flammability class	UL94-V0
Operating temperature from	-40 °C
Operating temperature to	120 °C

## APPROVALS

Rated voltage UL	1000 V
UL test standard	UL 1059
Rated voltage cUL	1000 V
Rated current cUL	380 A
cUL test standard	C22.2 No 158
GL test standard	IEC 60947-7-1:2009
EAC test standard	TR ZU 004/2011
KEMA KEUR test standard	EN 60947-7-1:2009

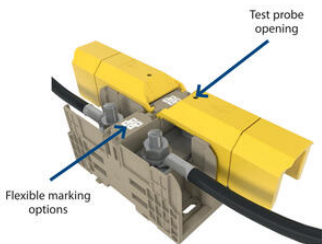
ADDITIONAL DATA

Tariff code	85369010
Country of origin	DE
Weight	409 g
Pack size	5
Bureau Veritas test standard	IEC 60947-7-1

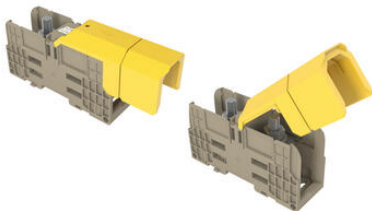
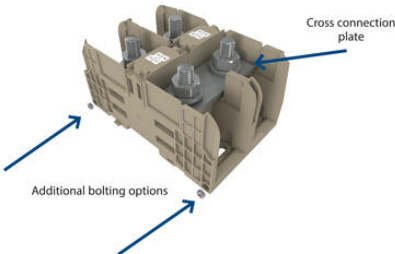


**Using the ADH covers**

Individual ADH... covers are available for each width of stud terminal. They are designed for the different sizes and the corresponding clearance and creepage distances. It is also possible to shorten the covers along pre-creased breakage points. The ADH cover is attached by pressing the cover down onto the base terminal so that the cover snaps onto the terminal.

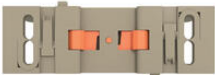
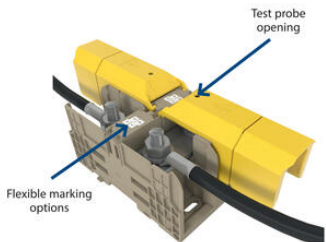


TS mount / direct mount



**Using the ADH covers**

Individual ADH... covers are available for each width of stud terminal. They are designed for the different sizes and the corresponding clearance and creepage distances. It is also possible to shorten the covers along pre-creased breakage points. The ADH cover is attached by pressing the cover down onto the base terminal so that the cover snaps onto the terminal.



TS mount / direct mount

