

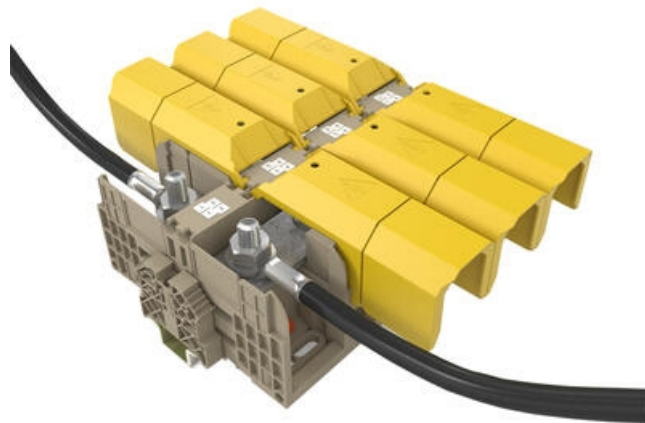
HIGH-POWER STUD TERMINALS - HSKG 35-300MM²

HSKG

17023.2

HSKG 120/M10/B/B, 120mm² Dual M10 stud terminal

- Dual stud connection
- Direct & TS35 mount
- IP20 with Gull Wing Covers fitted
- Material polyamide 6.6
- Fire-resistance class V0



PRODUCT DESCRIPTION

The newest generation of stud terminals from CONTA-CLIP offers secure connections for all high power conductors.

The HSKG stud terminals are available with stud sizes of with M6, M8, M10, M12 and rated current is from 125 A to 520A at a rated voltage of 1000 V. For higher currents the terminals can be easily and safely cross connected by snapping out a section of the built in partition plate.

The wire connection range is from 2.5 mm² to 300 mm². and crimped lugs are used to fit the cables to the busbar using the hexagonal nut with built in washer.

When used together with the ADH hinged covers, the HSKG stud terminals provide outstanding finger and touch protection. The ADH cover is easy to mount; it simply snaps into the side walls of the stud terminals as it is closed.

In this quick and reliable way, touch-safe protection of the terminal points is always guaranteed.

Added features include -

- Measuring Point located on the ADH covers to allow probes to be inserted without exposing the conductor.
- Direct or DIN Rail Mount
- Interlocking housings for improved stability
- Cross connectable

TECHNICAL DATA

GENERAL DATA

Rated wire cross section	120 mm ²
Colour	Beige
Rated voltage IEC	1000 V
Rated current IEC	269 A
Mounting	TS 35
Rated impulse voltage	8 kV
Overvoltage category	III
Contamination degree	3
Approvals	UL, GL, cUL, KEMA KUR, EAC

DIMENSIONS

Length	133 mm
Width	42 mm
Height TS 35/7.5	72 mm

Height with TW/ADH	80 mm
Length with TW/ADH	226 mm
Contact clamping area	≤ 120 mm ²

CONNECTION DATA

Connections	2
Number of levels	1
Stud size	M 10
Rated wire cross section from (AWG)	10
Rated wire cross section to (AWG)	250 Kcmil
Torque min	10
Torque max	20
DIN 46234 / 1 cable lug per side, min.	6 mm ²
DIN 46234 / 1 cable lug per side, max.	15 mm ²
DIN 46234 / 2 cable lugs per side, min.	6 mm ²
DIN 46234 / 2 cable lugs per side, max.	120 mm ²
DIN 46235: 1 cable lug per side, min.	16 mm ²
DIN 46235: 1 cable lug per side, max.	150 mm ²
DIN 46235: 2 cable lugs per side, min.	16 mm ²
DIN 46235: 2 cable lugs per side, max.	120 mm ²

MATERIALS

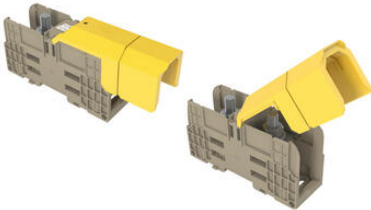
Insulation material	Polyamide 6.6
Flammability class	UL94-V0
Operating temperature from	-40 °C
Operating temperature to	120 °C

APPROVALS

Rated voltage UL	1000 V
UL test standard	UL 1059
Rated voltage cUL	1000 V
Rated current cUL	310 A
cUL test standard	C22.2 No 158
GL test standard	IEC 60947-7-1:2009
EAC test standard	TR ZU 004/2011
KEMA KEUR test standard	EN 60947-7-1:2009

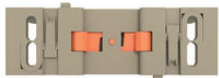
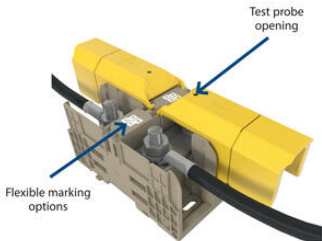
ADDITIONAL DATA

Tariff code	85369010
Country of origin	DE
Weight	245.7 g
Pack size	5
Bureau Veritas test standard	IEC 60947-7-1

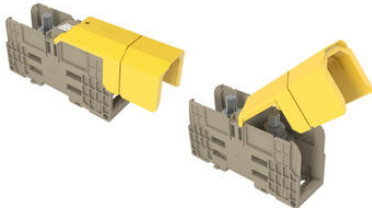
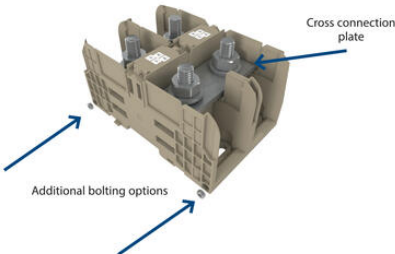


Using the ADH covers

Individual ADH... covers are available for each width of stud terminal. They are designed for the different sizes and the corresponding clearance and creepage distances. It is also possible to shorten the covers along pre-creased breakage points. The ADH cover is attached by pressing the cover down onto the base terminal so that the cover snaps onto the terminal.

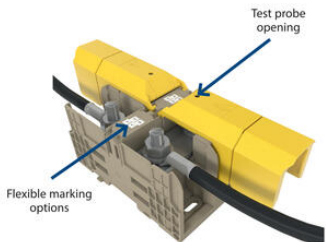


TS mount / direct mount



Using the ADH covers

Individual ADH... covers are available for each width of stud terminal. They are designed for the different sizes and the corresponding clearance and creepage distances. It is also possible to shorten the covers along pre-creased breakage points. The ADH cover is attached by pressing the cover down onto the base terminal so that the cover snaps onto the terminal.



TS mount / direct mount

