

LUTZE DC CIRCUIT PROTECTION

716410
LOCC-Box-NET Electronic fuse with comms, 12-24V
dc, 1-10A,



PRODUCT DESCRIPTION

TECHNICAL DATA

INPUT DATA

Input current max	10 A
Operating voltage dc min	10 V
Operating voltage dc max	32 V
Power through distribution beam max	40 A

OUTPUT DATA

Output current max	10 A
Adjustable current min	1 A
Adjustable current max	10 A
Adjustable steps	1 A
Voltage drop over semiconductor	170 mV
Capacitance max	10000 μ F

DIMENSIONS

Width	8.1 mm
Depth	116 mm

Height	114.5 mm
--------	----------

CONNECTION DATA

Cross section min	0.25 mm ²
-------------------	----------------------

Cross section max	2.5 mm ²
-------------------	---------------------

IP class	IP20
----------	------

APPROVALS

Approvals	CE, cULus, GL
-----------	---------------

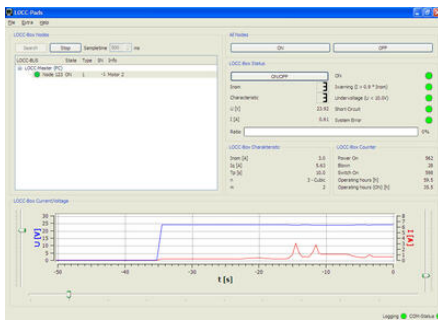
EMC	EN61000-6-2, EN61000-6-3
-----	--------------------------

ADDITIONAL DATA

Temperature operational min	-25 °C
-----------------------------	--------

Temperature operational max	50 °C
-----------------------------	-------

Weight	120 g
--------	-------



The screenshot shows the 'LOCC-Box Logging' window with 'Automatic Scrolling' checked. It displays a table of event logs with columns for Date/Time, Node, Status, Error, I [A], U [V], and Info.

Date/Time	Node	Status	Error	I [A]	U [V]	Info
5 2009-02-16 16:09:46	123	OFF		0.00	0.00	Motor 2
6 2009-02-16 16:09:48	123	ON		0.26	23.92	Motor 2
7 2009-02-16 16:10:15	123	OFF		0.00	0.00	Motor 2
8 2009-02-16 16:10:30	123	OFF	(...)	0.00	0.00	Motor 2
9 2009-02-16 16:11:08	123	ON		0.00	23.92	Motor 2
10 2009-02-16 16:11:28	123	ON	Inva...	3.07	23.77	Motor 2
11 2009-02-16 16:11:29	123	ON		0.64	23.92	Motor 2
12 2009-02-16 16:11:31	123	ON	Inva...	2.78	23.77	Motor 2
13 2009-02-16 16:11:32	123	ON		1.09	23.77	Motor 2
14 2009-02-16 16:12:16	123	ON		1.54	23.77	Motor 2
15 2009-02-16 16:12:17	123	ON		0.58	23.82	Motor 2
16 2009-02-16 16:12:26	123	ON		0.99	23.77	Motor 2
17 2009-02-16 16:12:27	123	ON		0.51	23.92	Motor 2

