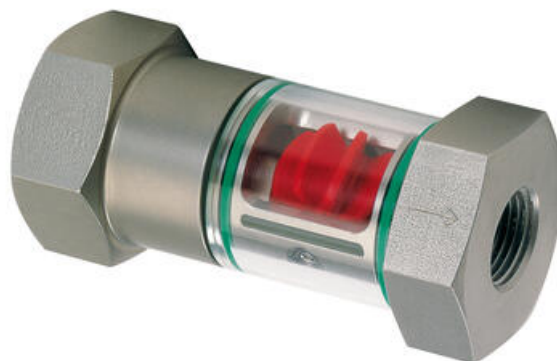


HONSBERG - WR1 SERIES FLOW INDICATOR

Sight glass/rotor

WR1-025GMG
35..350 l/min air/gases, G1F, Brass

- Ranges covering 0.7..100 l/min H2O
- Ranges covering 18 to 700 l/min air (1 bar)
- 16 bar max
- Brass connections



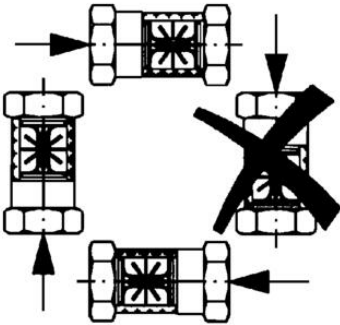
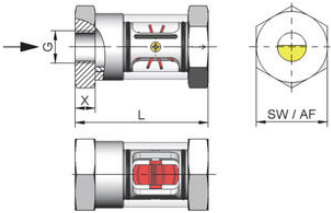
PRODUCT DESCRIPTION

The WR1 mechanical flow indicator is designed for use with water, oils and air/gases to show a quantitative flow display through a spinning rotor.

TECHNICAL DATA

| | |
|-------------------------------|--------------------------|
| Connection type | G1 female |
| Flow max | 350 l/min |
| Function | Rotor |
| Material of connection | Nickel-plated brass |
| Material of glass tube | Borosilicate glass |
| Material of rotor | POM |
| Material of seals | NBR |
| Material wipers | NBR |
| Media | Air/gases |
| Min flow rate for rotor (air) | 35 |
| Pressure drop | 0.25 bar at maximum flow |
| Pressure range max | 16 bar |
| Temperature of media from | 0 °C |
| Temperature of media to | 100 °C |
| Type of flow component | Flow indication |
| Weight | 0.65 kg |

| G | Types | L | SW | X | Weight kg |
|---------|-----------|-----|----|----|--------------|
| G 1/4 | WR1-008G. | 71 | 36 | 9 | 0.35 |
| G 3/8 | WR1-010G. | | | | |
| G 1/2 | WR1-015G. | 86 | 46 | 13 | 0.65 |
| G 3/4 | WR1-020G. | 94 | | 16 | |
| G 1 | WR1-025G. | 104 | 65 | 19 | 1.60 |
| G 1 1/4 | WR1-032G. | 120 | | | |
| G 1 1/2 | WR1-040G. | 130 | | 20 | |



| G | Types | L | SW | X | Weight kg |
|---------|-----------|-----|----|----|--------------|
| G 1/4 | WR1-008G. | 71 | 36 | 9 | 0.35 |
| G 3/8 | WR1-010G. | | | | |
| G 1/2 | WR1-015G. | 86 | 46 | 13 | 0.65 |
| G 3/4 | WR1-020G. | 94 | | 16 | |
| G 1 | WR1-025G. | 104 | 65 | 19 | 1.60 |
| G 1 1/4 | WR1-032G. | 120 | | | |
| G 1 1/2 | WR1-040G. | 130 | | 20 | |

