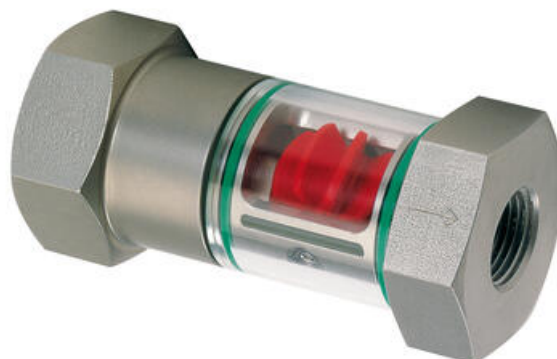


## HONSBERG - WR1 SERIES FLOW INDICATOR

Sight glass/rotor

WR1-032GMW  
8..80 l/min H<sub>2</sub>O, G1¼F, Brass

- Ranges covering 0.7..100 l/min H<sub>2</sub>O
- Ranges covering 18 to 700 l/min air (1 bar)
- 16 bar max
- Brass connections



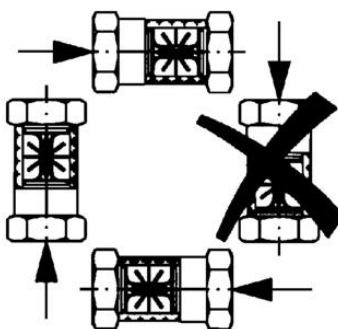
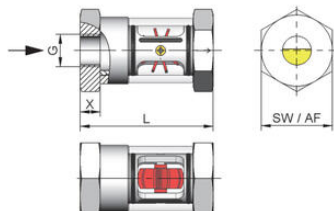
### PRODUCT DESCRIPTION

The WR1 mechanical flow indicator is designed for use with water, oils and air/gases to show a quantitative flow display through a spinning rotor.

### TECHNICAL DATA

Connection type	G1¼ female
Flow max	80 l/min
Function	Rotor
Material of connection	Nickel-plated brass
Material of glass tube	Borosilicate glass
Material of rotor	Nylon
Material of seals	NBR
Material wipers	NBR
Media	Water, oil
Min flow rate for rotor (oil 40 Cst) l/min	5.9
Min flow rate for rotor (oil 41-150 Cst) l/min	7.9
Min flow rate for rotor (water) l/min	8
Pressure drop	0.25 bar at maximum flow
Pressure range max	16 bar
Temperature of media from	0 °C
Temperature of media to	100 °C
Type of flow component	Flow indication
Weight	1.6 kg

G	Types	L	SW	X	Weight kg
G 1/4	WR1-008G.	71	36	9	0.35
G 3/8	WR1-010G.				
G 1/2	WR1-015G.	86	46	13	0.65
G 3/4	WR1-020G.	94		16	
G 1	WR1-025G.	104			
G 1 1/4	WR1-032G.	120	65	19	1.60
G 1 1/2	WR1-040G.	130		20	1.70



G	Types	L	SW	X	Weight kg
G 1/4	WR1-008G.	71	36	9	0.35
G 3/8	WR1-010G.				
G 1/2	WR1-015G.	86	46	13	0.65
G 3/4	WR1-020G.	94		16	
G 1	WR1-025G.	104			
G 1 1/4	WR1-032G.	120	65	19	1.60
G 1 1/2	WR1-040G.	130		20	1.70

