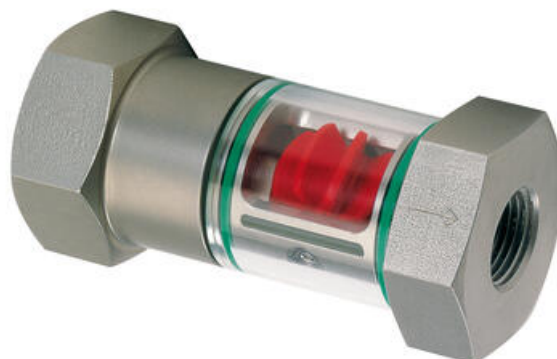


HONSBERG - WR1 SERIES FLOW INDICATOR

Sight glass/rotor

WR1-008GMW
0,7..4 l/min H₂O, G1/4F, Brass

- Ranges covering 0.7..100 l/min H₂O
- Ranges covering 18 to 700 l/min air (1 bar)
- 16 bar max
- Brass connections



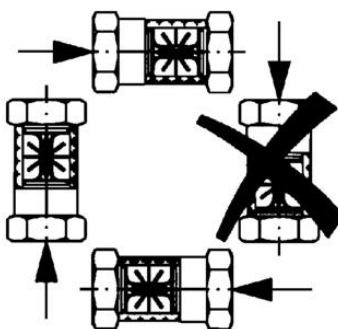
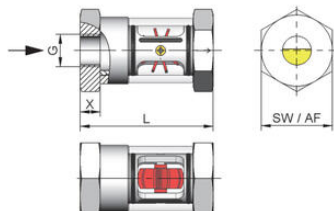
PRODUCT DESCRIPTION

The WR1 mechanical flow indicator is designed for use with water, oils and air/gases to show a quantitative flow display through a spinning rotor.

TECHNICAL DATA

Connection type	G1/4 female
Flow max	4 l/min
Function	Rotor
Material of connection	Nickel-plated brass
Material of glass tube	Borosilicate glass
Material of rotor	POM
Material of seals	NBR
Material wipers	NBR
Media	Water, oil
Min flow rate for rotor (oil 40 Cst) l/min	1.5
Min flow rate for rotor (oil 41-150 Cst) l/min	2.7
Min flow rate for rotor (water) l/min	0.7
Pressure drop	0.25 bar at maximum flow
Pressure range max	16 bar
Temperature of media from	0 °C
Temperature of media to	100 °C
Type of flow component	Flow indication
Weight	0.35 kg

G	Types	L	SW	X	Weight kg
G 1/4	WR1-008G.	71	36	9	0.35
G 3/8	WR1-010G.				
G 1/2	WR1-015G.	86	46	13	0.65
G 3/4	WR1-020G.	94		16	
G 1	WR1-025G.	104			
G 1 1/4	WR1-032G.	120	65	19	1.60
G 1 1/2	WR1-040G.	130		20	1.70



G	Types	L	SW	X	Weight kg
G 1/4	WR1-008G.	71	36	9	0.35
G 3/8	WR1-010G.				
G 1/2	WR1-015G.	86	46	13	0.65
G 3/4	WR1-020G.	94		16	
G 1	WR1-025G.	104			
G 1 1/4	WR1-032G.	120	65	19	1.60
G 1 1/2	WR1-040G.	130		20	1.70

