

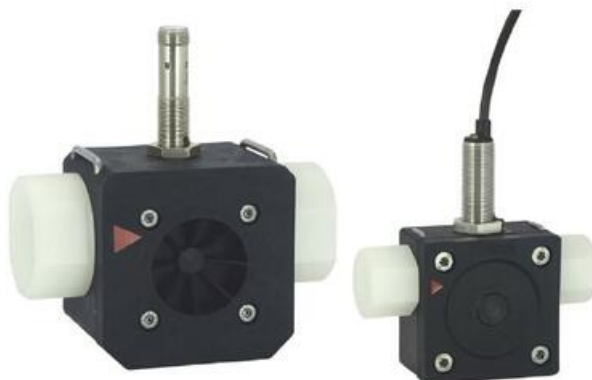
HONSBERG - RRI SERIES FLOW METER

Rotor

RRI-010GVP020E

Flow sensor 3/8", 0,1-1,5l/min, 4-20mA

- For liquids up to 16 bar pressure
- Flow range from 0.1 to 100 l/min. water
- Connection 3/8" or 1"



PRODUCT DESCRIPTION

Model RRI is a rotor sensor in plastic with inductive reading. The design offers a lot of options in terms of installation as it can be mounted in most locations and does not require any calming section either before or after. It has high resolution and is suitable for accurate measurement of flows of liquids in applications within liquid dosing or accurate volume calculation.

TECHNICAL DATA

Accuracy	± 3% of measurement value
Connection type	Internal thread, G 3/8 "
Electrical connection	2m cable or M12x1, 4-pole
Flow max	1.8 l/min
Flow range max	1.5 l/min
Flow range min	0.1 l/min
Function	Rotor, inductive sensor
IP class	IP67
Load max	200 mA
Material drum	Ceramic
Material of body	PPS, Questra
Material of connection	PVDF
Material of rotor	PVDF
Material of seals	Viton
Material storage	Igilidur X
Materials clips	Stainless steel 301
Power consumption	10 mA

Pressure drop	Approximately 0.5 bar at maximum flow
Pressure range max	16 bar
Repeatability	1 %
Signal outputs	4-20 mA
Temperature of media to	60 °C
Weight	0.2 kg
Viscosity max	10 cSt
Viscosity min	1 cSt
Voltage dc max	30 V
Voltage dc min	10 V

