

DOGA 319H - DC WIPER MOTOR WITH FEEDBACK

Right angle worm gearbox, hall sensors, IP65 option

319.4846.20.00
Worm gearmotor 12 V dc, 4 Nm, 100 rpm, 6 A, Hall sensors

- 12 - 24Vdc with positional feedback
- Up to 9Nm
- Up to 100rpm
- Compact low noise design
- High starting torque



PRODUCT DESCRIPTION

The DOGA 319H series uses a brushed DC motor with worm gearbox and is developed to provide a compact, low noise and cost-effective solution to suit many industrial applications. Integrated with the motor are hall effect sensors offering up to 972ppr positional accuracy of the output shaft for feedback of speed, direction, and position of the rotor.

The standard hardened plastic worm wheel offers smooth, low noise operation and good performance, along with durability. IP40 is standard (IP65 option), with an EMC filter option.

VOLTAGE: 12 / 24Vdc supply - ideally suited to **battery powered** and **mobile applications**.

TORQUE: >9Nm nominal, >60Nm starting – a good choice for applications requiring very **high start-up power**.

SPEED: 30 - 230rpm options using a range of motor/gearbox combinations.

For modest quantities DOGA can offer **product customisation** to better suit the individual needs of the customer and application. Adaptations can include changes to the output shaft, supply voltage, gear wheel material, cabling/connectors, gear ratios and motor windings.

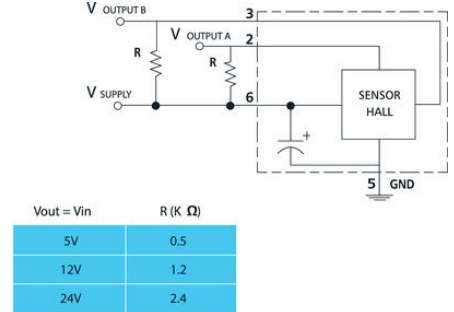
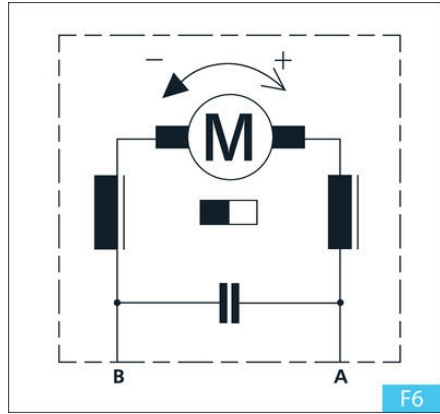
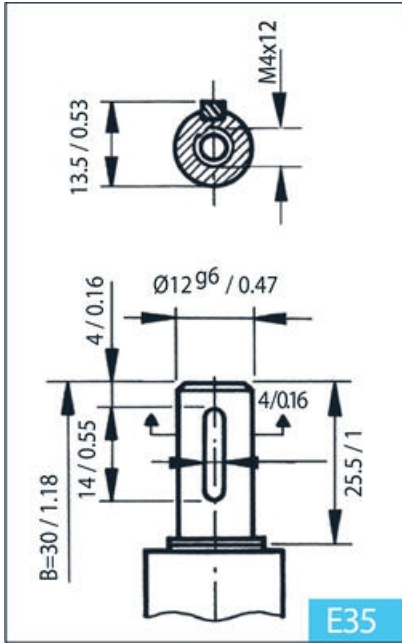
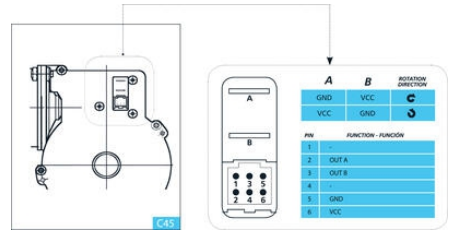
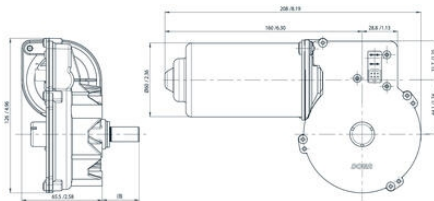
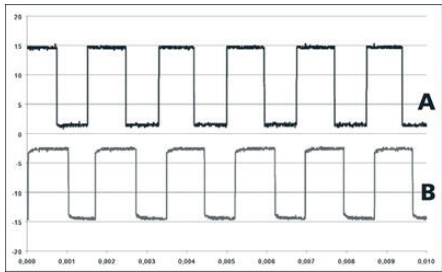
Typical applications include:

Agriculture
Building access
Care aid
Medical
Office equipment
Marine
General industrial automation

TECHNICAL DATA

Current max	60 A
EMC filter	Yes
IP class	IP40

Max. torque	40
Nominal current	6 A
Nominal speed	100 rpm
Nominal torque	4
Number of pulses per revolution	468
Positioning feedback	Yes
Ratio	78:2
Shaft diameter	12 mm
Supply voltage	12 V DC
Type of gearbox	Worm
Type of wheel	Plastic
Weight	1.7 kg



Vout = Vin	R (K Ω)
5V	0.5
12V	1.2
24V	2.4

