

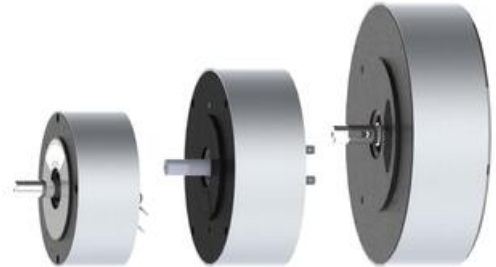


PMW DYNAMICS GM PANCAKE SERVO MOTOR

GM9

Precision servo motor, 360Ncm peak torque, <1 to 6000 rpm

- Extremely high power for physical size
- Available with 9, 12 or 16 cm armature width
- 150C ambient temperature capability
- Up to 1000W power
- Bespoke options available



PRODUCT DESCRIPTION

The GM series is a high precision, compact pancake motor for high performance industrial applications. Suitable for ambient temperatures of up to 150 degrees C, it has many areas of application outside of traditional motors.

Available in 9cm, 12cm and 16cm armature diameter sizes

Historically, servo applications that require a compact motor with perfect control have been perfect for the GM series. They are often a straight drop-in replacement for older series servo motors from PMI Kollmorgen.

Options include

- Shaft modifications
- Adaptions for high alititude
- Adaptions for vacuum environment
- Customer specific leads and connectors
- Imperial (US) specifications
- Encoder options
- EMC supression

Typical applications

- Industrial automation
- Medical machinery
- Marine and aviation
- Robotics
- Automotive