



DOGA - 168 SERIES

DC motor only, planetary option

168.4134.30.04

Motor 24 V dc, 0.3 Nm, 750 rpm, 1.5 A, shaft E59

- 12-24Vdc
- Up to 0.75 Nm
- Up to 3000 rpm
- 79mm diameter
- High starting torque



PRODUCT DESCRIPTION

The DOGA 168 series is a range of 79mm diameter permanent magnet DC motors that are developed for a compact, low noise and cost-effective solution to suit many industrial applications. IP40 is standard, with an EMC filter option.

VOLTAGE: 12 / 24Vdc supply - ideally suited to **battery powered** and **mobile applications**.

TORQUE: >0.75Nm nominal, >3.0Nm starting – a good choice for applications requiring **high start-up power**.

SPEED: 750 - 3000rpm options.

For modest quantities DOGA can offer **product customisation** to better suit the individual needs of the customer and application. Adaptations can include changes to the output shaft, supply voltage, cabling/connectors and motor windings.

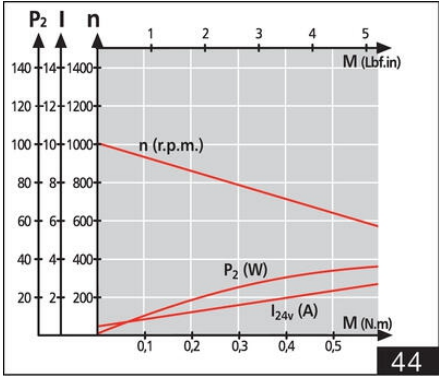
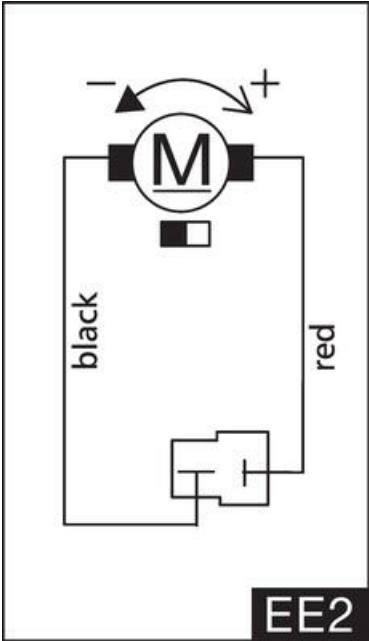
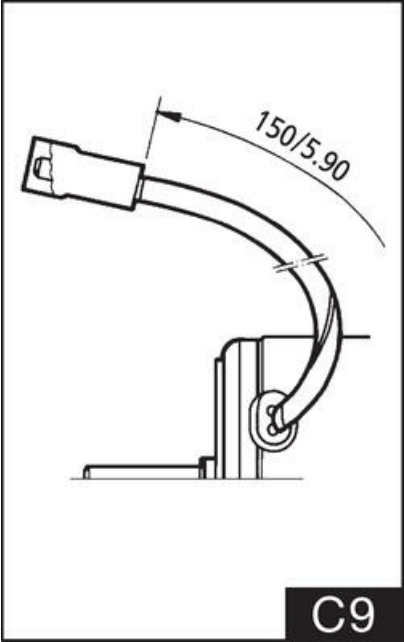
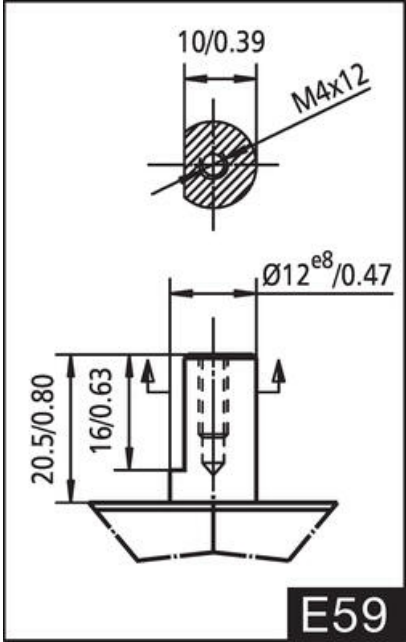
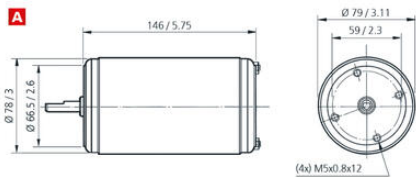
Typical applications include:

Agriculture
Building access
Care aid
Medical
Office equipment
Marine
General industrial automation

TECHNICAL DATA

Current max	7 A
EMC filter	No
IP class	IP40
Max. torque	1.5
Nominal current	1.5 A
Nominal speed	750 rpm
Nominal torque	0.3
Shaft diameter	12 mm

Supply voltage	24 V DC
Weight	2.6 kg



44