



DOGA 316H - DC WIPER MOTOR WITH FEEDBACK

Right angle worm gearbox, hall sensors

316.9747.20.00

Worm gearmotor 12 V dc, 1.5 Nm, 65 rpm, 6 A, Hall Sensors

- 12 - 24Vdc with positional feedback
- Up to 2Nm
- Up to 65rpm
- Compact low noise design
- High starting torque



PRODUCT DESCRIPTION

The DOGA 316H series uses a brushed DC motor with worm gearbox and is developed to provide a compact, low noise and cost-effective solution to suit many industrial applications. Integrated with the motor are hall effect sensors offering up to 310ppr positional accuracy of the output shaft for feedback of speed, direction, and position of the rotor.

The standard hardened plastic worm wheel offers smooth, low noise operation and good performance, along with durability. IP10 is standard, with an EMC filter option.

VOLTAGE: 12 / 24Vdc supply - ideally suited to **battery powered** and **mobile applications**.

TORQUE: >2Nm nominal, >10Nm starting – a good choice for applications requiring **high start-up power**.

SPEED: 38 - 65rpm options using a range of motor/gearbox combinations.

For modest quantities DOGA can offer **product customisation** to better suit the individual needs of the customer and application. Adaptations can include changes to the output shaft, supply voltage, gear wheel material, cabling/connectors, gear ratios and motor windings.

Typical applications include:

Agriculture

Building access

Care aid

Medical

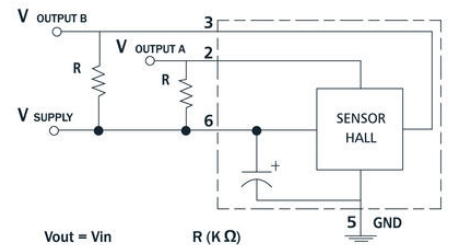
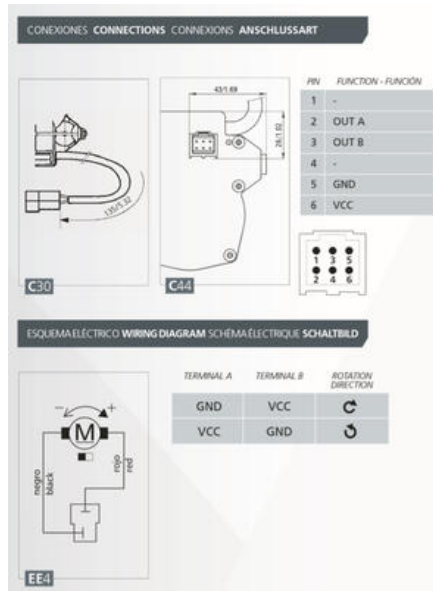
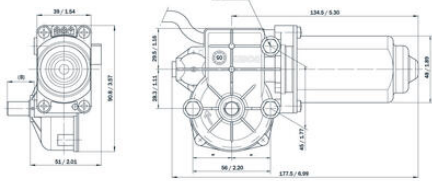
Office equipment

Marine

General industrial automation

TECHNICAL DATA

Current max	22 A
EMC filter	Yes
IP class	IP40



Vout = Vin	R (K Ω)
5V	0.5
12V	1.2
24V	2.4

