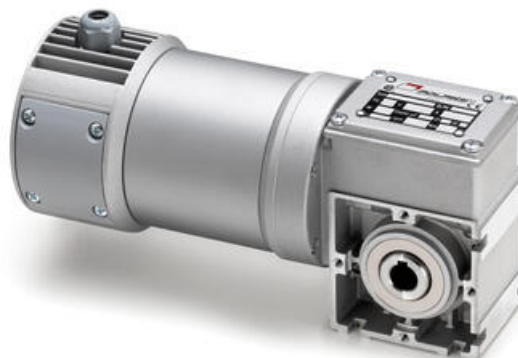


MINIMOTOR - PCC WORM GEAR MOTOR

PCC12MP3NB3-400

12V dc 400rpm 1.7Nm B3 mount

- 12 or 24VDC
- 75 to 150W delivered power
- Up to 18Nm rated torque
- B3 foot or B5 flange mounting
- IP65 as standard



PRODUCT DESCRIPTION

High quality, designed from the ground up to IP65 rated compact gear motor.

Physically smaller than the majority of similar powered gear motors due to the use of high quality components in precision manufacturing.

Ideally suited to many applications, including label and packaging machines, conveyors, pharmaceutical and medical machinery

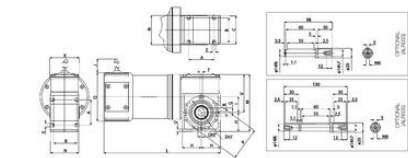
MOTOR: Direct current with permanent magnets, totally enclosed without external ventilation. Class F winding. 12 or 24 Vdc power supply. Absorbed power 230 W. IP65 protection according to CEI EN 60529

GEAR UNIT: Die-cast aluminium casing. Centre distance 32 mm. CARO bronze ring 120-160 HB hardness. Hardened steel screw with ground thread rotating on ball and roller bearings. Lubrication with special long life oil. Sealing rings made in special rubber for high temperatures. 9 gear ratios (i) available, from 7 to 100. Rated torque 18 Nm. Version B3 or B5. B5/S left version - B5/D right version.

[Please click here for 2D and 3D drawings](#)

TECHNICAL DATA

Input voltage dc	12V
IP class	IP65
Nominal speed	400 rpm
Nominal torque	1,7
Output power	75 W
Rated current	9.6A
Ratio	7:1



B3

	A	B	C	D	E	F	G	H	I	J	L	M	N	P	R	S	U	V	X	Power Output [Watt] P _{out}
PCC-MP0N	52	48	58	14	6,5	5	16,3	39	32	520	238	119	68	100	M5	61	5	80	60	4,560
PCC-MP0N	52	48	58	14	6,5	5	16,3	39	32	520	238	119	68	100	M5	61	5	80	60	6,456

Electric motor

15.06.2017

Gear motor

15.06.2017

Worm gear motor

15.06.2017

Brushless servomotor

15.06.2017

Clean product

15.06.2017

Please see product description above for 2D and 3D drawings

Electric motor

15.06.2017

Gear motor

15.06.2017

Worm gear motor

15.06.2017

Brushless servomotor

15.06.2017

Clean product

15.06.2017

Please see product description above for 2D and 3D drawings