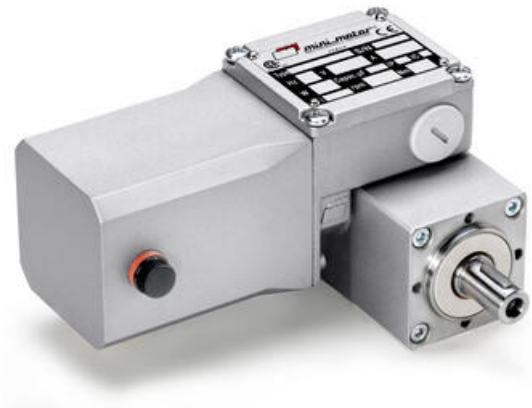


MINIMOTOR - BCE2000MP WORM GEAR MOTOR WITH PLANETARY REDUCTION

BCE200012MP-56
12V dc 56rpm 5.27Nm

- 12 or 24Vdc
- 37W delivered power
- Up to 15Nm rated torque
- Compact and powerful
- IP65 as standard



PRODUCT DESCRIPTION

High quality, designed from the ground up to IP65 rated compact gear motor.

Physically smaller than the majority of similar powered gear motors due to the use of high quality components in precision manufacturing.

Ideally suited to many applications, including label and packaging machines, conveyors, pharmaceutical and medical machinery

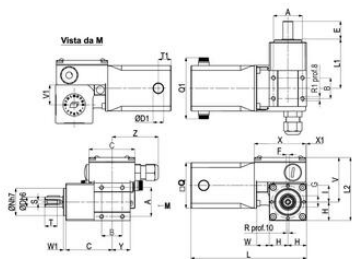
MOTOR: Direct current with permanent magnets, enclosed. Class F winding. 12 or 24 Vdc power. Absorbed power 60 W. IP65 protection according to CEI EN 60529.

GEAR UNIT: Die-cast aluminium case in first reduction stage, with worm screw and in steel in second planetary reduction stage with three internal planetary gears, ratio $i=5$. Centre distance 20 mm. Bronze ring with hardness 110 HB. Hardened steel screw with ground thread. Fluoridated polymer (FPM) grommets. Lubrication with synthetic oil (EP). 6 reduction gear ratios are available: 50/75/125/225/300/400.

[Please click here for 2D and 3D drawings](#)

TECHNICAL DATA

Input voltage dc	12V
IP class	IP65
Nominal speed	56 rpm
Nominal torque	5,27
Output power	37 W
Rated current	5A
Ratio	50:1



Type	A	B	C	D	D1	E	F	G	H	I	L	L1	L2	N	Q	Q1	R	R1	S	T	T1	V	V1	X	X1	Y	W	W1	Z
BC2200 MP	35	25	55,5	12	13	21,5	4	15,5	22,5	20	58,5	59,5	77,5	55	55	74	M5	M5	M5	15	15,5	55	24	42	1	22	15,5	3	56

BC2 model selection



Electric motors

15.06.2017



Gear motor

15.06.2017



Worm gear motors

15.06.2017



Brushless servomotors

15.06.2017



Clean products

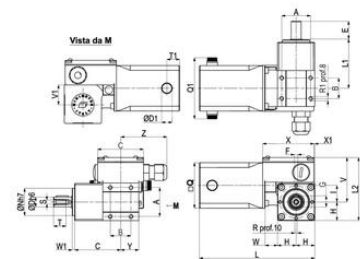
15.06.2017



Controls

15.06.2017

Please see product description above for 2D and 3D drawings



Type	A	B	C	D	D1	E	F	G	H	I	L	L1	L2	N	Q	Q1	R	R1	S	T	T1	V	V1	X	X1	Y	W	W1	Z
BC2200 MP	35	25	55,5	12	13	21,5	4	15,5	22,5	20	58,5	59,5	77,5	55	55	74	M5	M5	M5	15	15,5	55	24	42	1	22	15,5	3	56

BC2 model selection



Electric motors

15.06.2017



Gear motor

15.06.2017



Worm gear motors

15.06.2017



Brushless servomotors

15.06.2017



Clean products

15.06.2017



Controls

15.06.2017

Please see product description above for 2D and 3D drawings