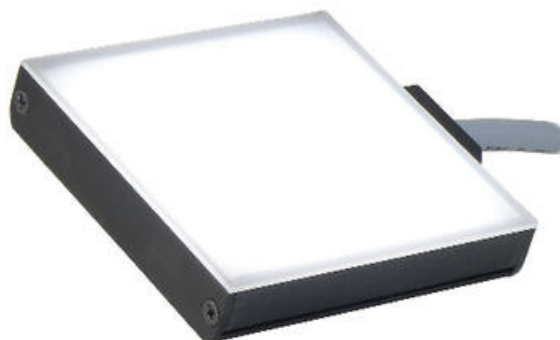


## ADVANCED ILLUMINATION BL128 EXPANDABLE SERIES BACK LIGHT

Back Lit Low Profile Backlights

BL128-470C5  
AI BL128 470 C5

- Edge to edge back lighting in a 12mm (.48") thick housing
- 2" wide, expandable in 1" increments; Lengths from 1" - 14"
- Optional washdown version offers IP65 compliant design



### PRODUCT DESCRIPTION

The BL128 series is expandable in 1" increments up to 14.4", with optional washdown version that is IP65 compliant. The BL series of compact Backlights provide edge to edge illumination in a 12mm thick housing.

Power options include:

- C1 connector - for use with DCS series controllers
- C5 connector - for use with Pulsar 320 strobe controller
- Continuous in-line controller - powered by 24V power supply
- Combination strobe/continuous in-line controller - powered by 24V power supply
- Default-OFF strobe/continuous in-line controller - powered by 24V power supply

For enquiries or quotes for sizes and power options not listed here please [contact us](#).

## TECHNICAL DATA

### TECHNICAL DATA

Wavelength	470
Colour	Blue
Length	62 mm
Width	58.7 mm
Connector/controller	C5 connector
Standard cable length	Up to 2 meters
Photobiological risk factor IEC 6247	Group 1 (low risk)
Operating temperature	0°C - 60°C
Approvals	IEC 62471, CE, RoHS
IP class	IP64

