

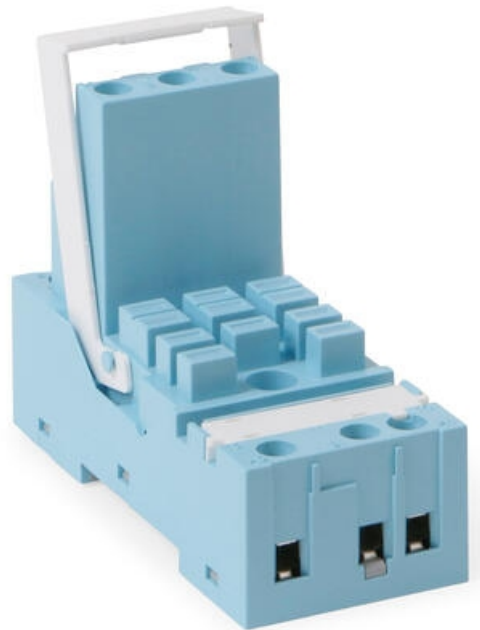
SOCKETS FOR C5 INDUSTRIAL RELAYS

3-pole

S5M

Socket For C5 Relay 11 Pin Screw

- Both DIN and EN connection numbering
- Semi-protected
- Integrated retaining bow
- Logic connection



PRODUCT DESCRIPTION

TECHNICAL DATA

OUTPUT DATA

Breaking Voltage	400 V
Breaking capacity current	16 A

GENERAL DATA

Isolation connection/connection	4000 V
Isolation connection/rail	4000 V
Material	Lexan
Torque connection	1
Mounting	DIN-rail
Screw size	M3.5, Pozi
Connection area single wire	6 mm ² / 2x2,5 mm ²
Connection area multiple conductors	1,5-6 mm ²
Temperature operational min	-40 °C
Storage temperature min	-40 °C
Storage temperature max	80 °C
Temperature operational max	60 °C

Weight

92 g

