

COMPACT LOOP HEATER 60 - 150W - LP 165

LP

16503.0-00

LP 165, 100W Slim line loop heater, 110V-265V ac/dc

- Compact with small foot print
- DIN rail mount
- Wide voltage range
- PTC technology



PRODUCT DESCRIPTION

Compact Slim line PTC loop heater designed for continuous operation. The new loop design increases the efficiency of the chimney heating effect and has enabled the width to be reduced, saving space in the enclosures

TECHNICAL DATA

GENERAL DATA

Heat output	100 W
Nominal voltage	120-240 V AC/DC
Heater body	Anodized aluminum
Mounting	DIN-rail 35mm
Connection type	3 pressure clamps for stranded wire 0.5-1.5mm ² and rigid wire 0.5- 2.5mm ²
Heat source	Self-regulating PTC-element
Starting current max	6 A
Recommended fuse (slow blow)	8 A

DIMENSIONS

Height	167 mm
Width	42 mm
Depth	121 mm
Weight	0.5 kg

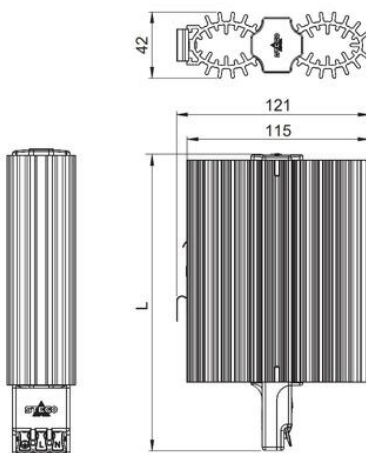
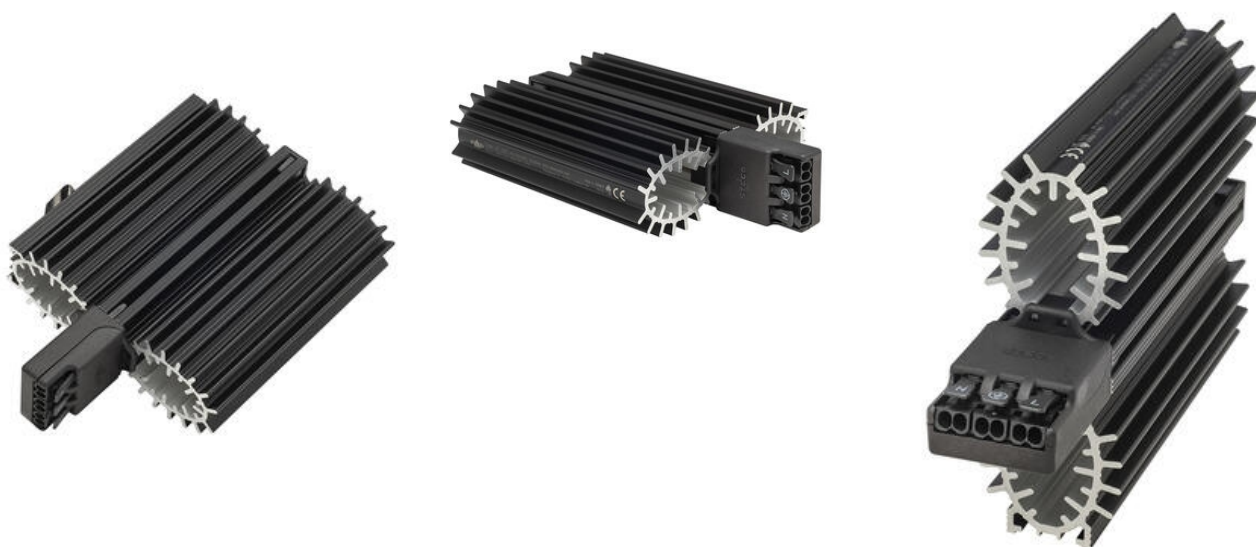
SAFETY & APPROVALS

Protection class	I (earthed)
------------------	-------------

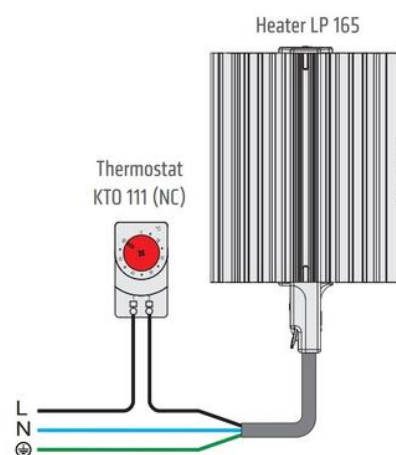
IP class	IP20
Approvals	RoHS 3, CE, UKCA, cRUus, EAC, UL E234324, VDE

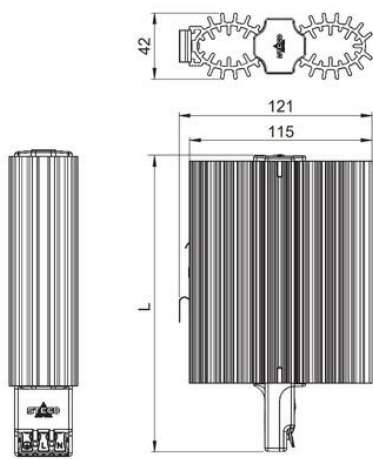
RATED OPERATING CONDITIONS

Operational temperature	-45°C ... +70°C
Storage temperature	-45°C ... +70°C
Operating humidity	<90% RH
Humidity storage	<90% RH
Voltage min	110 V ac/dc
Voltage max	265 V ac/dc
Housing	Anodized aluminium



Example of connection





Example of connection

