

AUTOVIMATION SALAMANDER ENCLOSURES

20.312.192

Salamander M, rear wall C (H 29mm, L< 50mm)



- Robust enclosure, max. camera size 40x40mm (29x47mm)
- Maximum lens diameter 55mm in profile, 52mm in front lid
- Inner length 94mm (XS), 136mm (S), 189mm (M) and 219mm (L)
- Excellent heat dissipation, IP67 rated
- Wide selection of accessories available for mounting and maintenance

PRODUCT DESCRIPTION

[Enclosure configurator](#)

Thanks to its cylindrical inner shape the Salamander provides space to accommodate cameras of 29 x 47mm to 40 x 40mm cross section. The series is available in four lengths and adapts so easily to the total length of camera, lens and plugs. Optionally, it can be further expanded with a housing extension. The rear walls with cable glands or protective hose connection allow the waterproof performance of several cables and connectors up to 26mm diameter (42mm with rear wall G). The patented Quick-Lock/Heat-Guide camera mount inside the housing ensures a flexible and vibration-proof assembly. The good heat connection acts as a passive heat sink. So the temperature of the camera is reduced up to 20°C compared to free assembly. In addition to various installation kits for mounting and adjustment, a range of accessories is available, that e.g. allows for use in dirty, hot or cold environment.

autoVimation offers a wide selection of enclosures to suit even the most specific requirements. To find a suitable enclosure please see the Enclosure Configurator (link above) or contact OEM Finland sales team for additional info!



Order Numbers:

| Product ID | Camera Height | Camera Length | Enclosure Type | Rear Wall Type | Length |
|------------|--|-------------------------------------|----------------|------------------------------|---------------------------------------|
| 2 | 29: 0 30: 1 31: 2 32: 3 33: 4 34: 5 35: 6 36: 7 38: 8 40: 9 | < 50mm: 3 < 74mm: 5 < 92mm: 7 | 1 | A: 0 B: 1 C: 2 D: 3 | XS: 070 S: 139 M: 192 L: 222 |

TECHNICAL DATA

| | |
|------------------|-------------------|
| Height | 66 mm |
| Housing material | Anodised aluminum |

| | |
|--------------------|---------|
| Inner length | 189 mm |
| IP class | IP67 |
| Length | 203 mm |
| Max camera height | 40 mm |
| Max camera width | 40 mm |
| Max connector size | 26.5 mm |
| Max lens diameter | 55 mm |
| Weight | 1070 g |
| Width | 66 mm |
| Window seal | FKM |

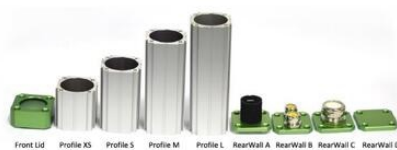
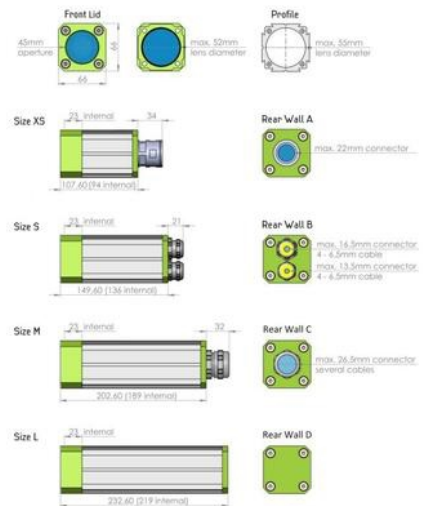


Order Numbers:

| Product ID | Camera Height | Camera Length | Enclosure Type | Rear Wall Type | Length |
|------------|--|----------------------------------|----------------|------------------------------|---------------------------------------|
| 2 | 29: 8 30: 1 31: 2 32: 3 33: 4 34: 5 35: 6 36: 7 38: 8 40: 9 | <50mm: 3 >74mm: 5 <92mm: 7 | 1 | A: 0 B: 1 C: 2 D: 3 | XS: 070 S: 139 M: 192 L: 222 |

Accessories:

| Product | Image | Order No. | Product | Image | Order No. | Product | Image | Order No. |
|-----------------------|-------|--------------------------|----------------------|-------|--------------------------|-----------------|-------|-----------|
| Air Nozzle | | 50.100.025 | Cooling Module | | 60.100.010 | Mounting kit 2 | | 5.020.000 |
| 2" Wind Curtain | | 50.100.010 | EL Heating Plate | | 70.100.010 | Mounting kit 6 | | 5.060.000 |
| Tube for W. Curtain | | 50.100.017 | Orca Adapter | | 15.030.001 | Mounting kit 7 | | 5.070.000 |
| Pneumatic Shutter | | 50.200.010 | Sun Roof Size S, M | | 20.010.001 20.010.002 | Mounting kit 9 | | 5.090.000 |
| Deflection Mirror 90° | | 20.020.004 | Sun Roof Size L | | 20.010.003 | Mounting kit 10 | | 5.100.000 |
| 30/60mm Extension | | 15.015.030 15.015.060 | Corrugated Tube 28mm | | 20.000.006 | Mounting kit 15 | | 5.150.000 |
| 60mm Side Exit | | 15.015.061 | Alignment Tool | | 90.000.014 | Mounting kit 16 | | 5.160.000 |
| Position Ring | | 20.020.003 | Mounting kit 1 | | 5.010.000 | Mounting kit 17 | | 5.170.000 |



Order Numbers:

| Product ID | Camera Height | Camera Length | Enclosure Type | Rear Wall Type | Length |
|------------|--|----------------------------------|----------------|------------------------------|---------------------------------------|
| 2 | 29: 8 30: 1 31: 2 32: 3 33: 4 34: 5 35: 6 36: 7 38: 8 40: 9 | <50mm: 3 >74mm: 5 <92mm: 7 | 1 | A: 0 B: 1 C: 2 D: 3 | XS: 070 S: 139 M: 192 L: 222 |

Accessories:

| Product | Image | Order No. | Product | Image | Order No. | Product | Image | Order No. |
|-----------------------|-------|--------------------------|----------------------|-------|--------------------------|-----------------|-------|-----------|
| Air Nozzle | | 50.100.025 | Cooling Module | | 60.100.010 | Mounting kit 2 | | 5.020.000 |
| 2" Wind Curtain | | 50.100.010 | EL Heating Plate | | 70.100.010 | Mounting kit 6 | | 5.060.000 |
| Tube for W. Curtain | | 50.100.017 | Orca Adapter | | 15.030.001 | Mounting kit 7 | | 5.070.000 |
| Pneumatic Shutter | | 50.200.010 | Sun Roof Size S, M | | 20.010.001 20.010.002 | Mounting kit 9 | | 5.090.000 |
| Deflection Mirror 90° | | 20.020.004 | Sun Roof Size L | | 20.010.003 | Mounting kit 10 | | 5.100.000 |
| 30/60mm Extension | | 15.015.030 15.015.060 | Corrugated Tube 28mm | | 20.000.006 | Mounting kit 15 | | 5.150.000 |
| 60mm Side Exit | | 15.015.061 | Alignment Tool | | 90.000.014 | Mounting kit 16 | | 5.160.000 |
| Position Ring | | 20.020.003 | Mounting kit 1 | | 5.010.000 | Mounting kit 17 | | 5.170.000 |

