

BRASS EARTH DISTRIBUTION TERMINALS

MRS

MRS7000
MRS-S 9x6

- Screws in galvanized steel.
- High conductivity brass
- Complete with fixings
- Earthing Bars



PRODUCT DESCRIPTION

Teknomegas earthing and neutral terminals offer lengths and connections.

The brass earth and neutral terminals comes in 1-meter lengths which can be cut down to suit an application.

With the various versions, Teknomega have designed holes at the end of the terminals making it easier to fix on to boards.

Double earthing terminals offers a double connection with blind holes which can have a cable lug up to 95mm².

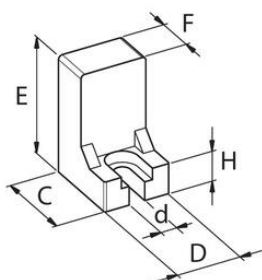
The terminal supports are made manufactured in polyamide 66 self-extinguishing V2-UL94.

TECHNICAL DATA

DIMENSIONS

Height 31 mm

Bar width 17.5 mm



Code	Reference	Terminal cross-section AuB	C (mm)	D (mm)	E (mm)	F (mm)	H (mm)	d (mm)
MRS7000	MRS-S 9x6	9 x 6	22	17.5	31	11	8	4.2
MRS7005	MRS-S 12x8	12 x 8	22	17.5	31	11	8	4.2

