

LONG HANDLE ILLUMINATED SELECTOR SWITCH

Long Lever Handle

L21MP30
Selector Long Handle Illuminated 3 Pos Spring Ret 45°
Black

- IP66 / IP69K
- 2 or 3 position
- Illuminate with LED blocks
- Black lever with translucent surround



PRODUCT DESCRIPTION

Illuminated selector switch head with a long lever handle that mount in a 22.5mm hole with protection rating IP66 / IP69K
Combine with clip, contact blocks and LED module (must be in centre position) to make complete illuminated selector switch assembly.

The central part of the switch head, side and tip of the lever are translucent and illuminate according to the colour of LED block used.
The lever of the switch is solid in colour and available only in black.

Available in 2 or 3 position, latching or spring return in various switching angles.

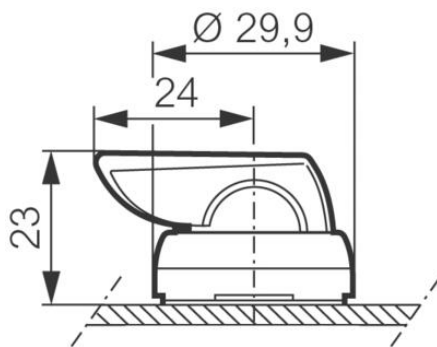
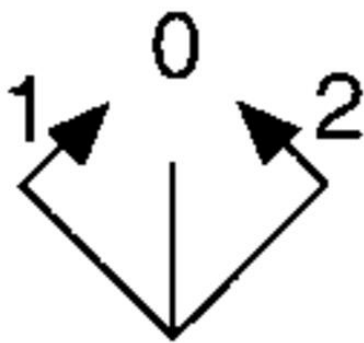
Supplied with a matt chrome bezel as standard.

For black plastic bezel change the part number from L21xxxx to L22xxxx.

TECHNICAL DATA

Angle	45°
Approvals	UL 508, CSA 22.2, BV, CB, CE
Climatic resistance - constant humid heat	IEC 60068-2-3
Climatic resistance - cyclic damp heat	IEC 60068-2-30
Climatic resistance - sea air	IEC 60068-2-52
Colour	Black
Function	Spring return
Illuminated	Yes
Impact resistance	IK05
IP class	IP66, IP69, IP69K
Mechanical life expectancy	300 000 cycles

Positions	3
Protection class	II (double insulated)
Recommended tightening torque	3
Storage temperature max	70 °C
Storage temperature min	-40 °C
Temperature operational max	70 °C
Temperature operational min	-25 °C
Type	Long lever
Weight	17.8 g



Kontakternas funktion till belysta vred med 3 positioner

Vredets position sett framifrån panelen.
 Kontaktblockens aktivitet sett framifrån panelen.
 LED blocket är fritt att påverkas eller ej av kontakternas funktion.

