

LONG HANDLE NON-ILLUMINATED SELECTOR SWITCH

Long Lever Handle

L21MR03
Selector Long Handle 3 Position Stable 45° Black

- IP66 / IP69K
- 2 or 3 position
- Latching or spring return
- Optional lever colours



PRODUCT DESCRIPTION

Non illuminated selector switch head with a long lever handle that mount in a 22.5mm hole with protection rating IP66 / IP69K
Combine with separate clip and contact blocks to make complete switch assembly.

Standard body colour is grey with a black lever but also available with red, green & grey lever please enquire for more details.

Available in 2 or 3 position, latching or spring return in various switching angles.

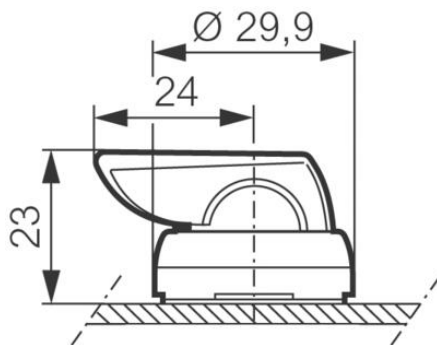
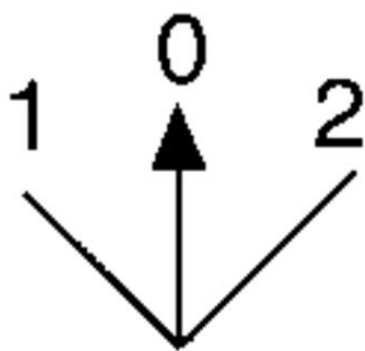
Supplied with a matt chrome bezel as standard.

For black plastic bezel change the part number from L21xxxx to L22xxxx.

TECHNICAL DATA

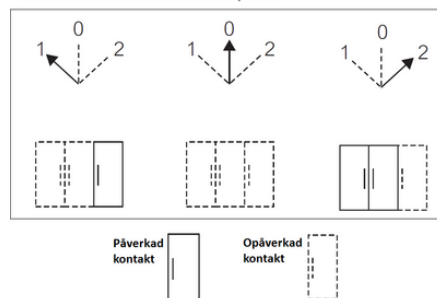
Angle	45°
Approvals	UL 508, CSA 22.2, BV, CB, CE
Climatic resistance - constant humid heat	IEC 60068-2-3
Climatic resistance - cyclic damp heat	IEC 60068-2-30
Climatic resistance - sea air	IEC 60068-2-52
Colour	Black
Function	Stable
Illuminated	No
Impact resistance	IK05
IP class	IP66, IP69, IP69K
Mechanical life expectancy	300 000 cycles
Positions	3
Protection class	II (double insulated)

Recommended tightening torque	3
Storage temperature max	70 °C
Storage temperature min	-40 °C
Temperature operational max	70 °C
Temperature operational min	-25 °C
Type	Long lever
Weight	17.8 g



Kontakternas funktion till obelyst vred med 3 positioner

Vredets position sett framifrån panelen.
Kontaktblockens aktivitet sett framifrån panelen.



Kontaktien toiminta 3-asentoisille valintakytkimille (ei valoa)

Valintakytkimen asento paneelin edestä katsottuna
Kosketinyksiköiden toiminta paneelin edestä katsottuna

