



SUCO 0530 ELECTRONIC PRESSURE SWITCH

053025130B010
PNP output (High Side), NO, 0-25 Bar, M10x1 zyl. DIN
3852-A, Deutsch DT04-3P

- One switching output
- Stainless steel & titanium wetted parts
- Silicon-on-sapphire technology
- Factory set



PRODUCT DESCRIPTION

The Suco high performance series of electronic pressure switches offers outstanding overpressure protection (up to 4x), long service life even under high pressure change rates whilst giving very low temperature error and excellent long-term stability. Using Silicon-on-sapphire technology for high reliability, EMC compatibility and accuracy there are five standard pressure ranges starting at 0-10 bar all the way up to 0-600 bar and a hysteresis of 0.2%-99.8%. Output option of PNP or NPN and the choice of normally open or normally closed with one switching output factory set (unadjustable by the user). The wetted parts are made of stainless steel and titanium in an all welded design ensuring excellent media compatibility with seven standard electrical connection options including Deutsch, DIN and M12 combined with eight standard thread type options.

Customer specific solutions are also available on request.

Application examples

- Automotive
- Braking systems
- Medical
- Mobile hydraulics
- Off highway
- Off-shore
- Rail

TECHNICAL DATA

GENERAL DATA

Adjustment range max	25 bar
Adjustment range min	0 bar
Electrical connection	Deutsch DT04-3P
Process connection	M10x1

Function	Normally open (SPST)
Output	PNP
Burst pressure	200 bar
Pressure max	100 bar

TEMPERATURE & MATERIALS DATA

Temperature of media from	-40 °C
Temperature of media to	125 °C
Temperature ambient from	-40 °C
Temperature ambient to	100 °C
Material of body	Stainless steel 1.4305
Material of wetted parts	Stainless steel 1.4305, Titanium

ADDITIONAL DATA

Supply voltage dc max	32 V DC
Supply voltage dc min	9.6 V DC
Pressure rise	≤ 5,000 bar/s
Switching time	< 2 ms
Switching point adjustment range	2 ... 100 % of the nominal pressure range Full Scale (FS), programmable at factory
Weight	80 g

SAFETY & APPROVALS

IP class	IP67, IP6K9K
Hysteresis	2..99.8% of nominal pressure range (full scale), programmable at factory
Shock resistance	500m / s ² ; 11 ms half sine wave; DIN EN 60068-2-27
Vibration resistance	20g: 4..2000 Hz sine wave, DIN EN 60068-2-6
EMC	EMC 2014/30/EU, EN 61000-6-2:2005, EN 61000-6-3:2007
Accuracy	±0.5 % of adjustment range (Full scale) at room temperature
Long term stability	±0.1 % of adjustment range (full scale) per year
Mechanical life expectancy	10,000,000 switching cycles at rise rates to 5,000 bar/s nominal pressure
Repeatability	±0.1 % full scale



DIN EN 175301-803-A	M 12 - DIN EN 61076-2-101 A	ISO 15176-A1-4.1	AMP Superseal																																								
<table><tr><th>Pin</th><th>Assignment</th></tr><tr><td>1</td><td>Ch+</td></tr><tr><td>2</td><td>Ch-</td></tr><tr><td>3</td><td>Ch0</td></tr><tr><td>4</td><td>Ch1</td></tr></table>	Pin	Assignment	1	Ch+	2	Ch-	3	Ch0	4	Ch1	<table><tr><th>Pin</th><th>Assignment</th></tr><tr><td>1</td><td>Ch+</td></tr><tr><td>2</td><td>Ch-</td></tr><tr><td>3</td><td>Ch0</td></tr><tr><td>4</td><td>Ch1</td></tr></table>	Pin	Assignment	1	Ch+	2	Ch-	3	Ch0	4	Ch1	<table><tr><th>Pin</th><th>Assignment</th></tr><tr><td>1</td><td>Ch+</td></tr><tr><td>2</td><td>Ch-</td></tr><tr><td>3</td><td>Ch0</td></tr><tr><td>4</td><td>Ch1</td></tr></table>	Pin	Assignment	1	Ch+	2	Ch-	3	Ch0	4	Ch1	<table><tr><th>Pin</th><th>Assignment</th></tr><tr><td>1</td><td>Ch+</td></tr><tr><td>2</td><td>Ch-</td></tr><tr><td>3</td><td>Ch0</td></tr><tr><td>4</td><td>Ch1</td></tr></table>	Pin	Assignment	1	Ch+	2	Ch-	3	Ch0	4	Ch1
Pin	Assignment																																										
1	Ch+																																										
2	Ch-																																										
3	Ch0																																										
4	Ch1																																										
Pin	Assignment																																										
1	Ch+																																										
2	Ch-																																										
3	Ch0																																										
4	Ch1																																										
Pin	Assignment																																										
1	Ch+																																										
2	Ch-																																										
3	Ch0																																										
4	Ch1																																										
Pin	Assignment																																										
1	Ch+																																										
2	Ch-																																										
3	Ch0																																										
4	Ch1																																										
Pin1 • 10 mm • 10 mm Order number: 001	Pin1 • 10 mm • 10 mm Order number: 002	Pin1 • 10 mm • 10 mm Order number: 004	Pin1 • 10 mm • 10 mm Order number: 007																																								
*without cable (cable = 10 mm), with cable (cable = 10 mm)																																											
DEUTSCH DT04-4P																																											
<table><tr><th>Pin</th><th>Assignment</th></tr><tr><td>1</td><td>Ch+</td></tr><tr><td>2</td><td>Ch-</td></tr><tr><td>3</td><td>Ch0</td></tr><tr><td>4</td><td>Ch1</td></tr></table>	Pin	Assignment	1	Ch+	2	Ch-	3	Ch0	4	Ch1	<table><tr><th>Pin</th><th>Assignment</th></tr><tr><td>1</td><td>Ch+</td></tr><tr><td>2</td><td>Ch-</td></tr><tr><td>3</td><td>Ch0</td></tr></table>	Pin	Assignment	1	Ch+	2	Ch-	3	Ch0	<table><tr><th>Cable</th><th>Assignment</th></tr><tr><td>white</td><td>Ch+</td></tr><tr><td>black</td><td>Ch-</td></tr><tr><td>red</td><td>Ch0</td></tr><tr><td>blue</td><td>Ch1</td></tr></table>		Cable	Assignment	white	Ch+	black	Ch-	red	Ch0	blue	Ch1												
Pin	Assignment																																										
1	Ch+																																										
2	Ch-																																										
3	Ch0																																										
4	Ch1																																										
Pin	Assignment																																										
1	Ch+																																										
2	Ch-																																										
3	Ch0																																										
Cable	Assignment																																										
white	Ch+																																										
black	Ch-																																										
red	Ch0																																										
blue	Ch1																																										
Pin1 • 10 mm • 10 mm Order number: 004	Pin1 • 10 mm • 10 mm Order number: 010	Pin1 • 10 mm • 10 mm Order number: 011																																									
Thread code 41	Thread code 42	Thread code 43	Thread code 44																																								
Thread code 45	Thread code 46	Thread code 47	Thread code 48																																								



Fig. 22

Connection diagrams

Fig. 23: 10 mm



Fig. 24: 10 mm

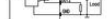


Fig. 25: 10 mm

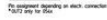


Fig. 26: 10 mm

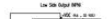


Fig. 27: 10 mm



Fig. 28: 10 mm



Fig. 29: 10 mm



Fig. 30: 10 mm



Fig. 31: 10 mm



Fig. 32: 10 mm



Fig. 33: 10 mm



Fig. 34: 10 mm



Fig. 35: 10 mm

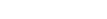


Fig. 36: 10 mm



Fig. 37: 10 mm



Fig. 38: 10 mm



Fig. 39: 10 mm



Fig. 40: 10 mm



Fig. 41: 10 mm



Fig. 42: 10 mm



Fig. 43: 10 mm



Fig. 44: 10 mm



Fig. 45: 10 mm



Fig. 46: 10 mm



Fig. 47: 10 mm



Fig. 48: 10 mm



Fig. 49: 10 mm



Fig. 50: 10 mm



Fig. 51: 10 mm



Fig. 52: 10 mm



Fig. 53: 10 mm



Fig. 54: 10 mm



Fig. 55: 10 mm



Fig. 56: 10 mm



Fig. 57: 10 mm



Fig. 58: 10 mm



Fig. 59: 10 mm



Fig. 60: 10 mm



Fig. 61: 10 mm



Fig. 62: 10 mm



Fig. 63: 10 mm



Fig. 64: 10 mm



Fig. 65: 10 mm



Fig. 66: 10 mm



Fig. 67: 10 mm



Fig. 68: 10 mm

Fig. 69: 10 mm

Fig. 70: 10 mm

Fig. 71: 10 mm

Fig. 72: 10 mm

Fig. 73: 10 mm

Fig. 74: 10 mm

Fig. 75: 10 mm

Fig. 76: 10 mm

Fig. 77: 10 mm

Fig. 78: 10 mm

Fig. 79: 10 mm

Fig. 80: 10 mm

Fig. 81: 10 mm

Fig. 82: 10 mm

Fig. 83: 10 mm

Fig. 84: 10 mm

Fig. 85: 10 mm

Fig. 86: 10 mm

Fig. 87: 10 mm

Fig. 88: 10 mm

Fig. 89: 10 mm

Fig. 90: 10 mm

Fig. 91: 10 mm

Fig. 92: 10 mm

Fig. 93: 10 mm

Fig. 94: 10 mm

Fig. 95: 10 mm

Fig. 96: 10 mm

Fig. 97: 10 mm

Fig. 98: 10 mm

Fig. 99: 10 mm

Fig. 100: 10 mm

Fig. 101: 10 mm

Fig. 102: 10 mm

Fig. 103: 10 mm

Fig. 104: 10 mm

Fig. 105: 10 mm

Fig. 106: 10 mm

Fig. 107: 10 mm

Fig. 108: 10 mm

Fig. 109: 10 mm

Fig. 110: 10 mm

Fig. 111: 10 mm