



## SUCO - 0184/0185 PRESSURE SWITCH

IP65

0184459031009

10..50 bar, G1/4, CO, NBR, DIN

- Up to 250 V
- Connector included (DIN 43650/Form A)
- Five adjustment ranges from 0,3..1,5 bar to 50..200 bar
- Changeover (SPDT)
- Over pressure safety from 100 bar up to 600 bar



### PRODUCT DESCRIPTION

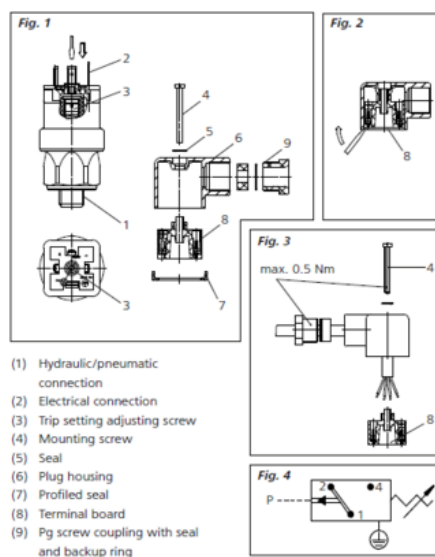
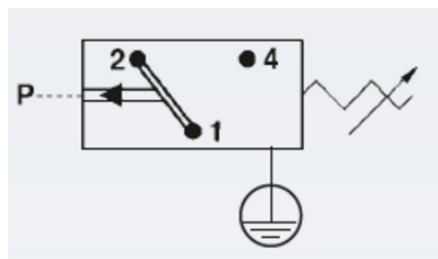
The 0184/0185 series is part of the changeover contact range from SUCO with an integrated plastic body and connector. Offering a maximum voltage of 250 V with a normally open and normally closed contact housed in a hex 27 zinc plated body offering a high pressure resistance. The switch point is very stable even after a long period of time and high load and is also adjustable on site and can come pre-set.

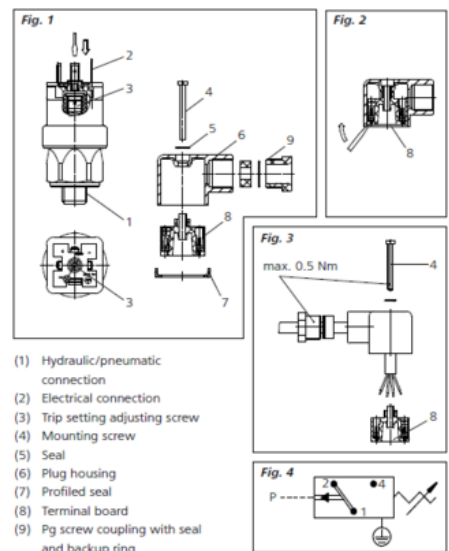
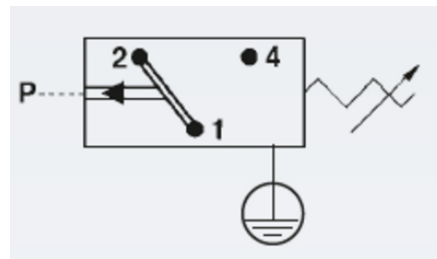
Common applications include power packs, mobile hydraulics, water systems, hydraulics generally and pneumatics.

### TECHNICAL DATA

Adjustment range max	50 bar
Adjustment range min	10 bar
Approvals	CSA US, RoHS II
Contact load max ac	4 A
Contact load max dc	0.25 A
Deviation max	±3,0
Electrical connection	DIN EN 175301-803-A
Function	Changeover (SPDT)
IP class	IP65
Material membrane	NBR
Material of body	Galvanized steel
Material of wetted parts	Galvanized steel, NBR

Max switching frequency/min	200
Pressure max	300 bar
Pressure range max	50 bar
Pressure range min	10 bar
Pressure type	Relativt tryck
Process connection	1/4 BSP
Temperature ambient from	-20 °C
Temperature ambient to	80 °C
Temperature of media from	-40 °C
Temperature of media to	100 °C
Type Pressure Switch	High accuracy
Weight	130 g
Voltage ac/dc max	250 V
Voltage ac/dc min	10 V





- (1) Hydraulic/pneumatic connection
- (2) Electrical connection
- (3) Trip setting adjusting screw
- (4) Mounting screw
- (5) Seal
- (6) Plug housing
- (7) Profiled seal
- (8) Terminal board
- (9) Pg screw coupling with seal and backup ring